



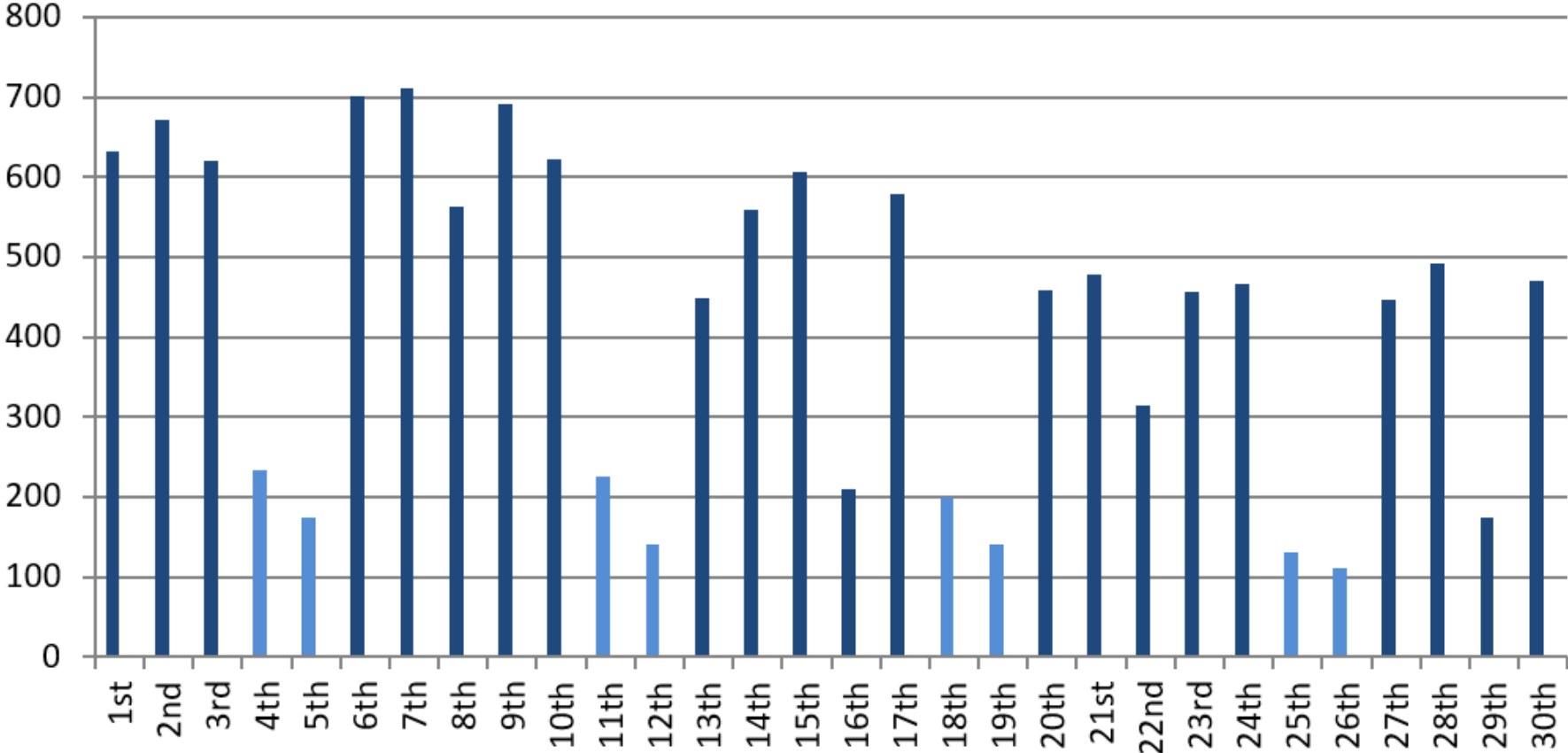
## Performance Indicators

November 2017



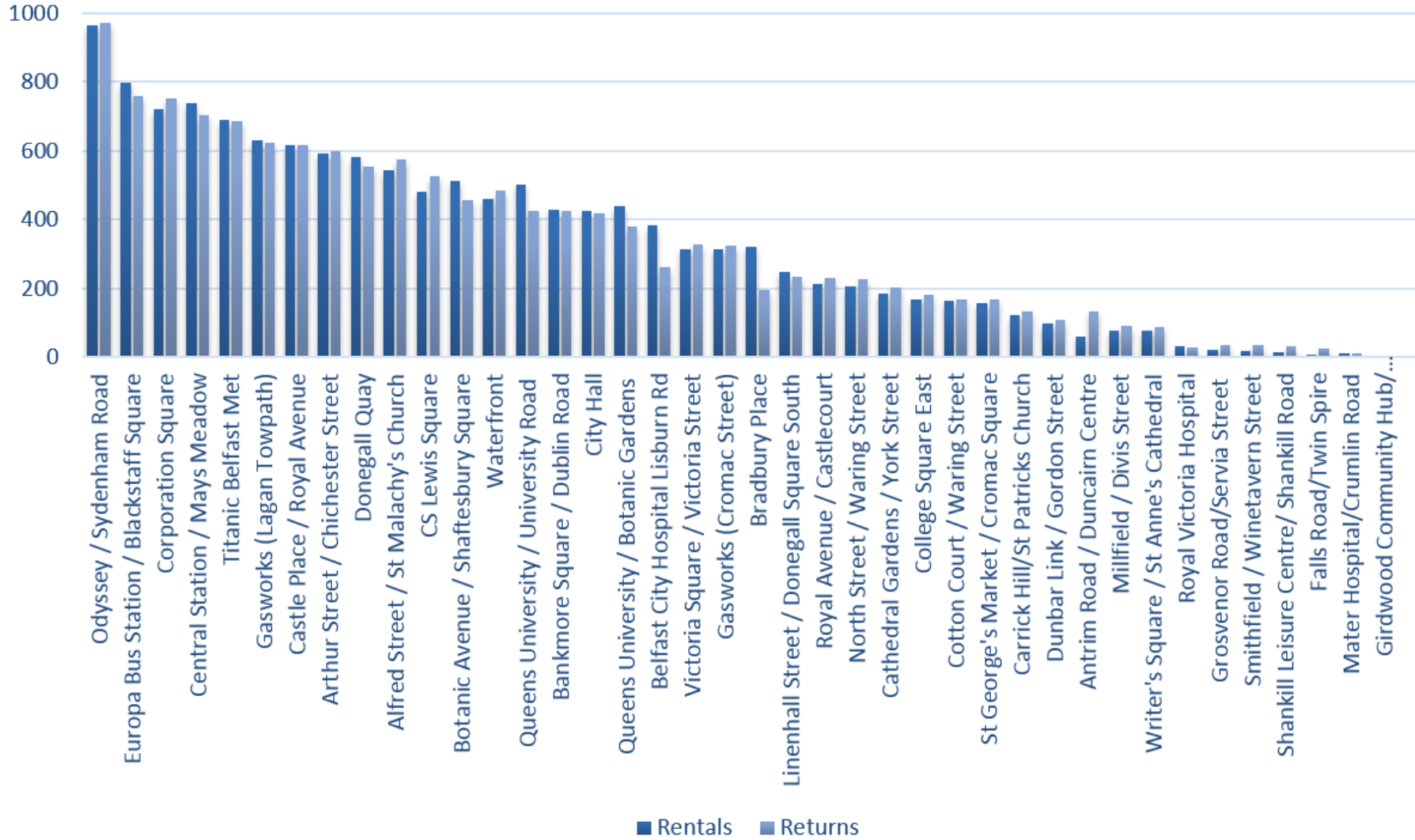
# November 2017

During the month of November, there were **12,726** rentals. The rental fluctuations are shown below:



## November 2017

The most popular stations in November for renting and returning combined were: (1) Odyssey (2) Europa/Blackstaff (3) Corporation Square



# November 2017

The total rentals to the end of November were **552,431**. The monthly fluctuations of rentals from the launch of the scheme are shown below.

