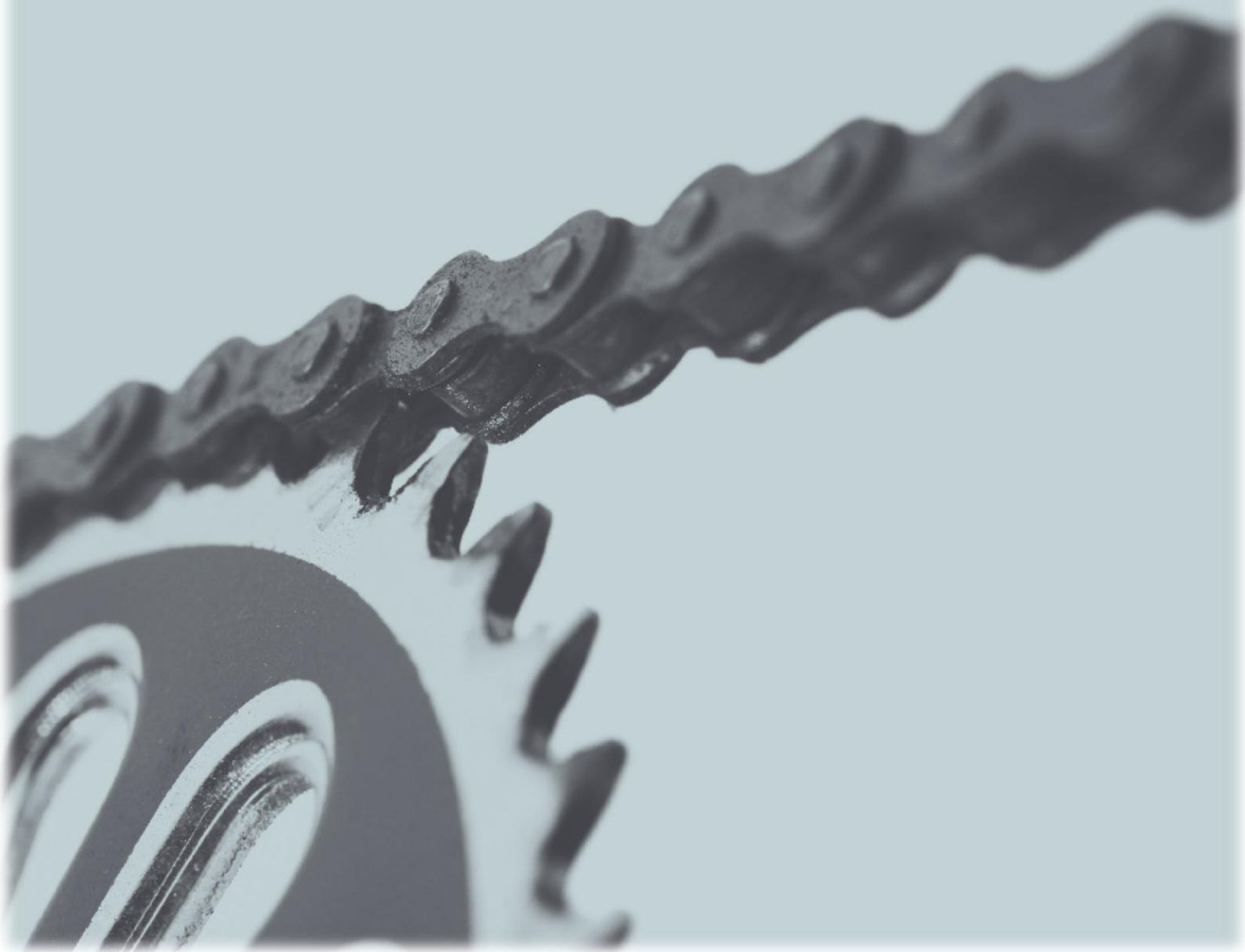


Coca-Cola
zero

 belfast
bikes

Performance Indicators

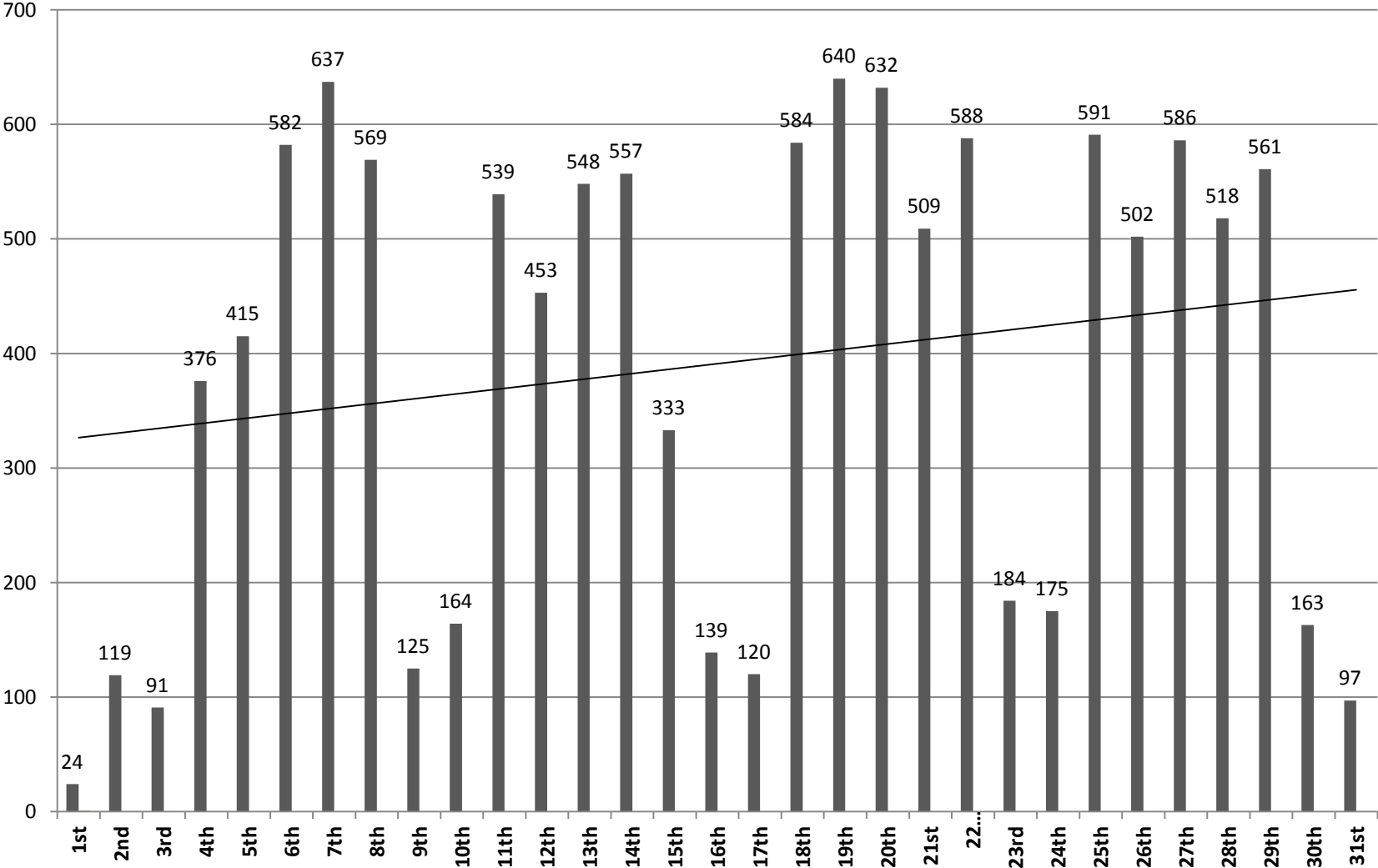
January 2016



January 2016

During the month of January there were 12,121 rentals; rental patterns were mostly affected by weather and commuting patterns and public holidays. The rental fluctuations are shown below:

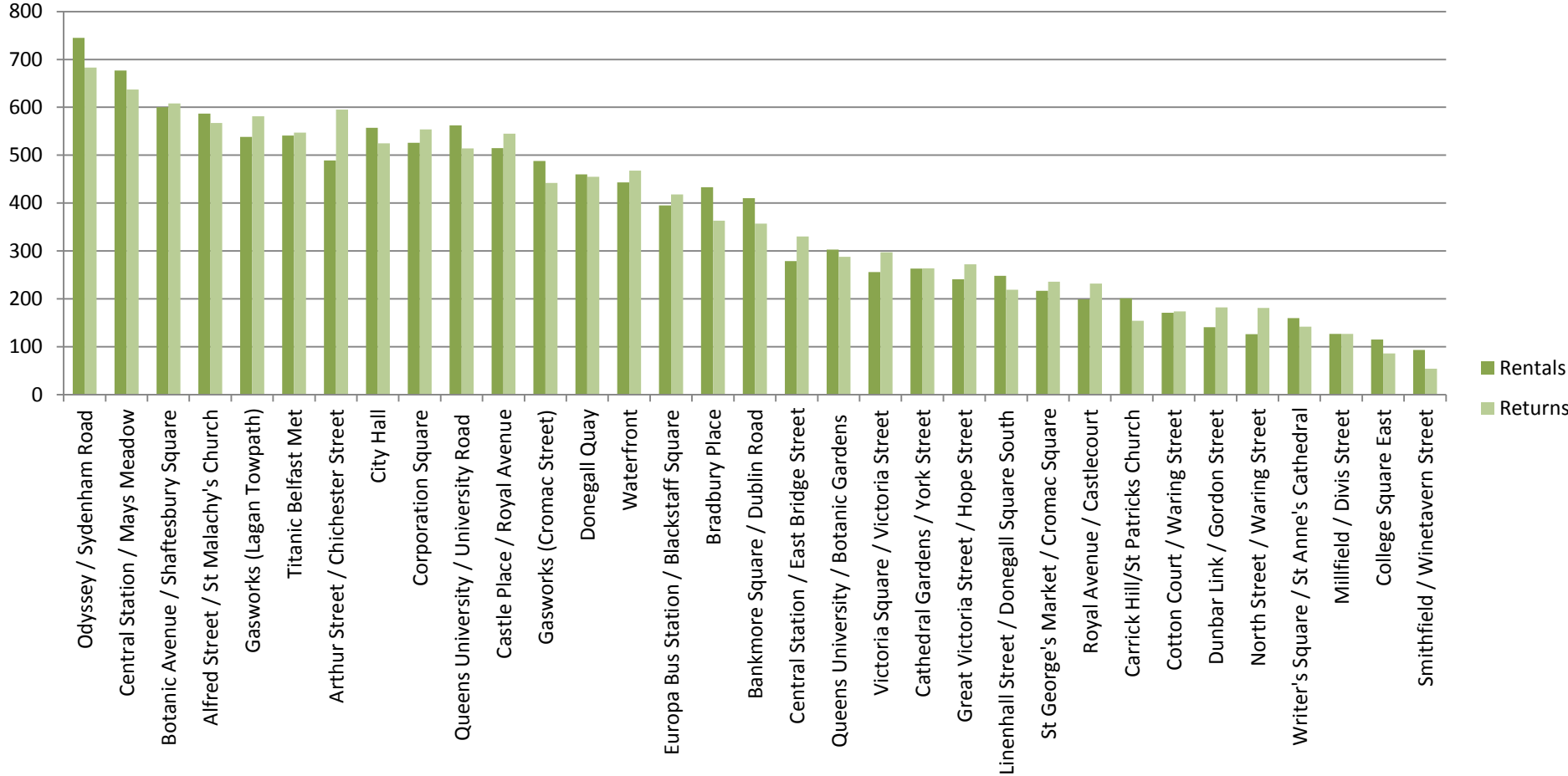
Daily Cycle Hires



January 2016

The most popular stations during the month of January for renting and returning combined were 1) Odyssey 2) Bradbury Place 3) Botanic Avenue/Shaftesbury Square as shown below:

Rentals and Returns By Station



January 2016

The total rentals to the end of January were 155,341. The weekly fluctuations of rentals from the launch of the scheme are shown below:

Weekly Cycle Hires YTD

