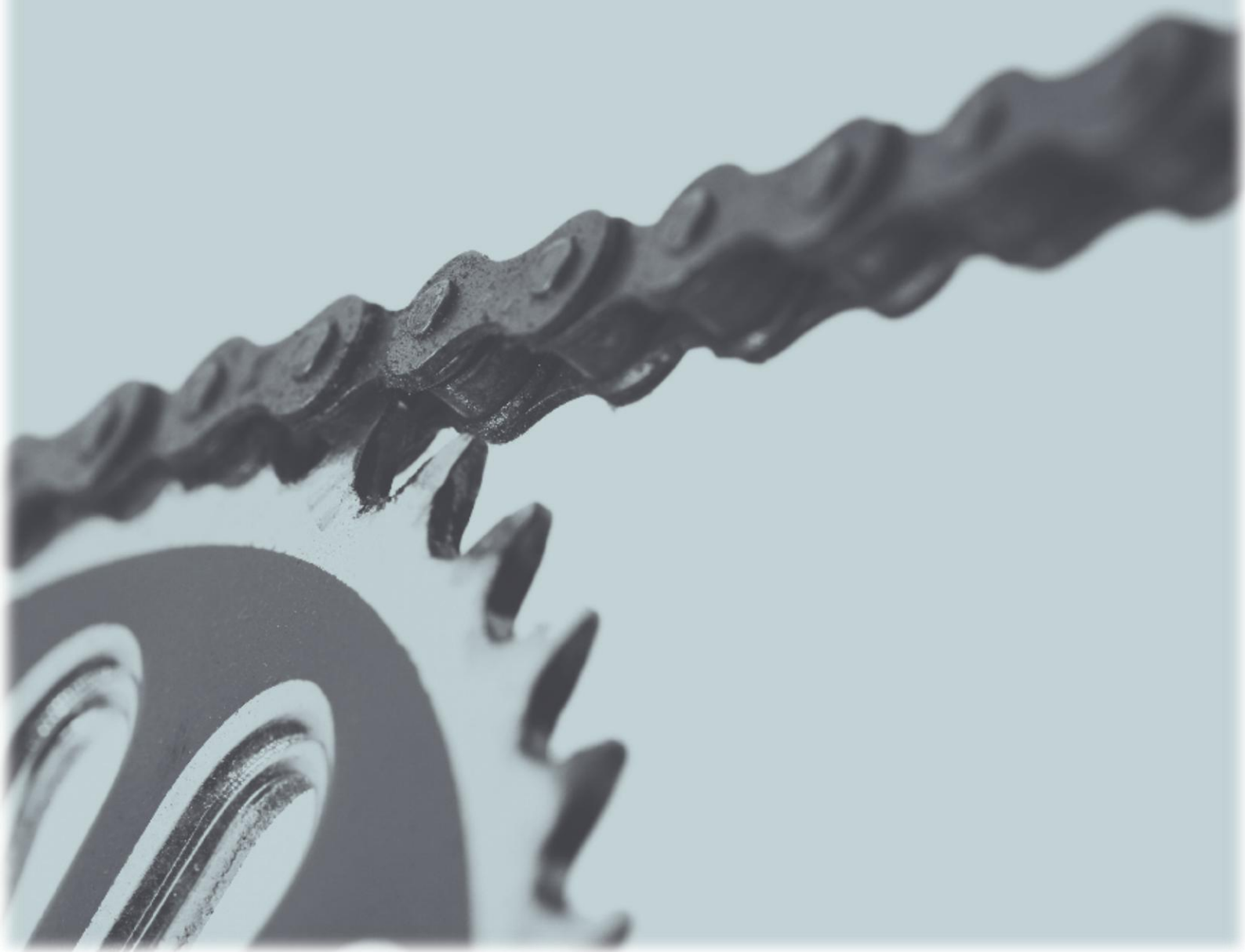


*Coca-Cola*  
zero

 belfast  
bikes

Performance Indicators

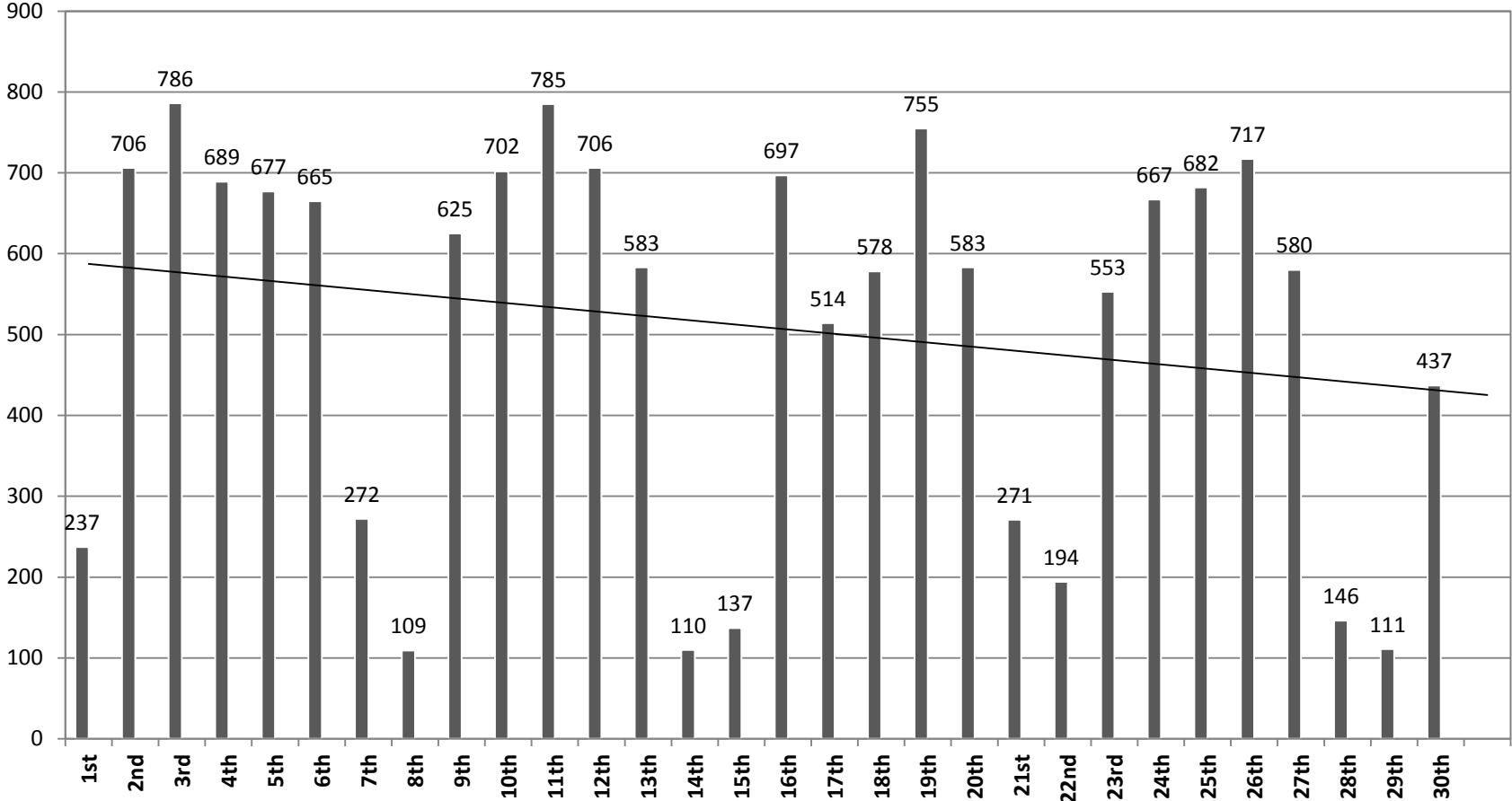
November 2015



# November 2015

During the month of November there were 15,274 rentals; rental patterns were mostly affected by weather and commuting patterns with numbers still lowest at the weekends. The rental fluctuations are shown below:

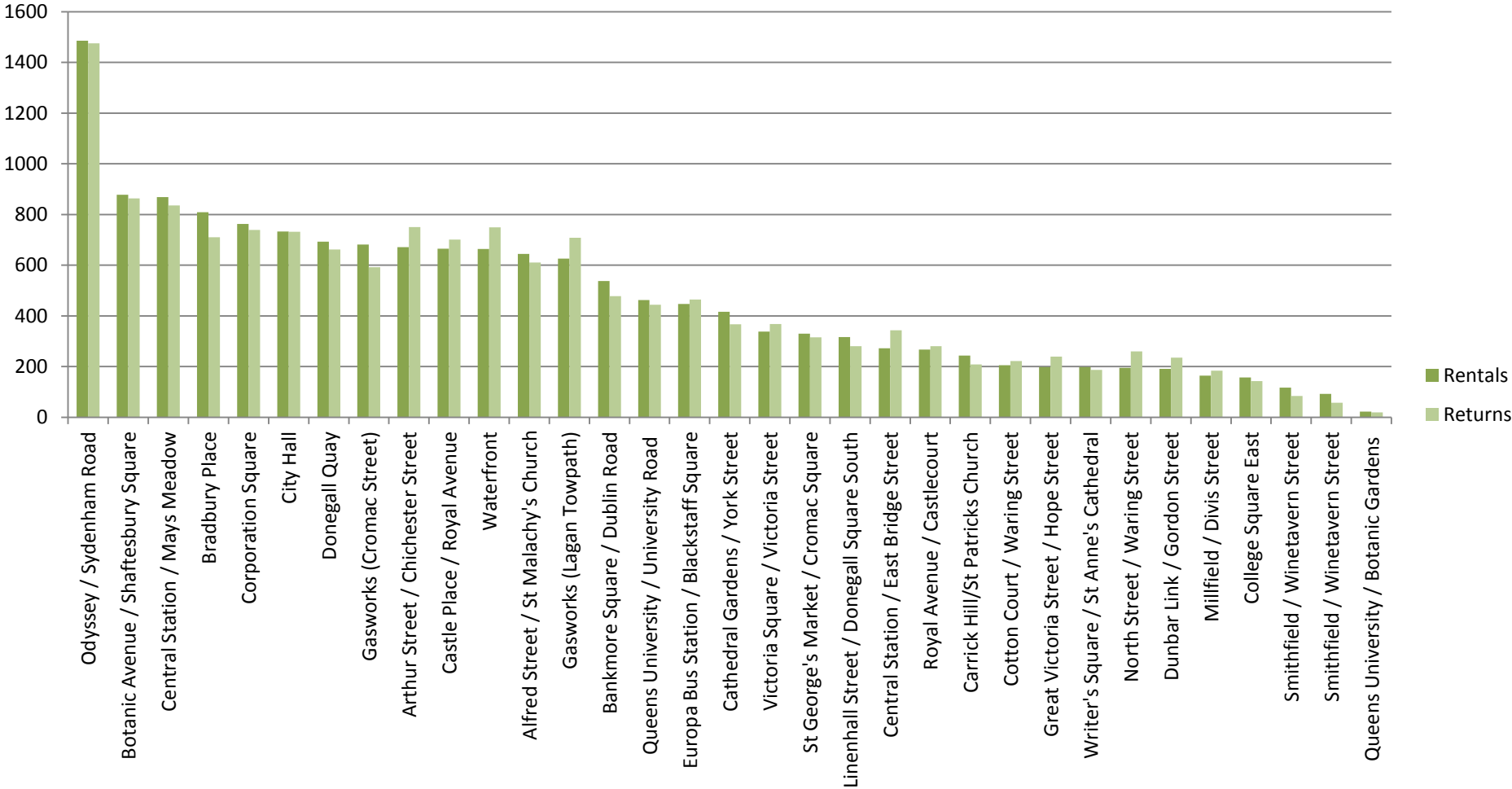
### Daily Cycle Hires



# November 2015

The most popular stations during the month of November for renting and returning combined were 1) Odyssey 2) Bradbury Place 3) Botanic Avenue/Shaftesbury Square as shown below:

## Rentals & Returns by Station



# November 2015

The total rentals to the end of November were 130,186. The weekly fluctuations of rentals from the launch of the scheme are shown below:

### Weekly Cycle Hires YTD

