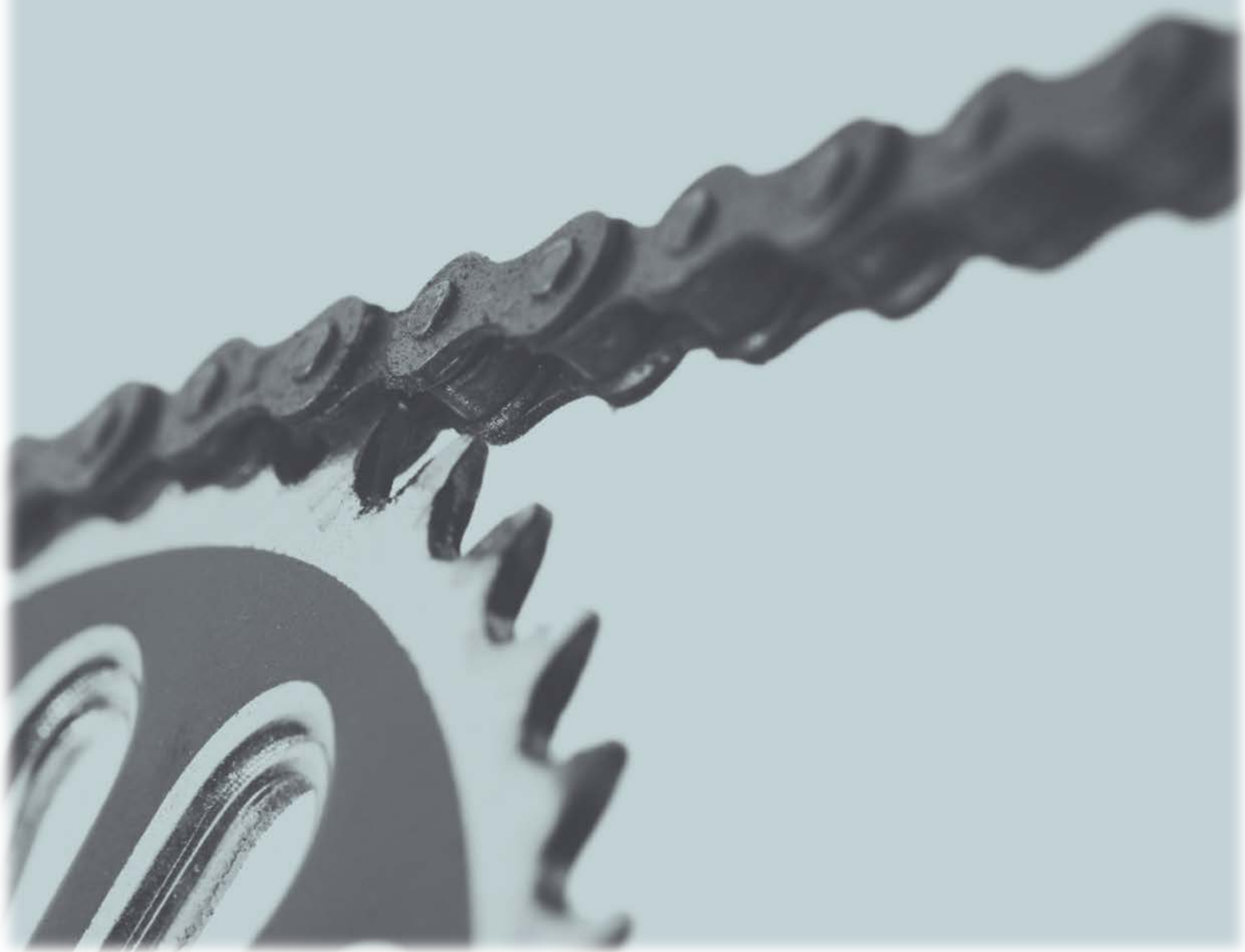


Coca-Cola
zero

 belfast
bikes

Performance Indicators

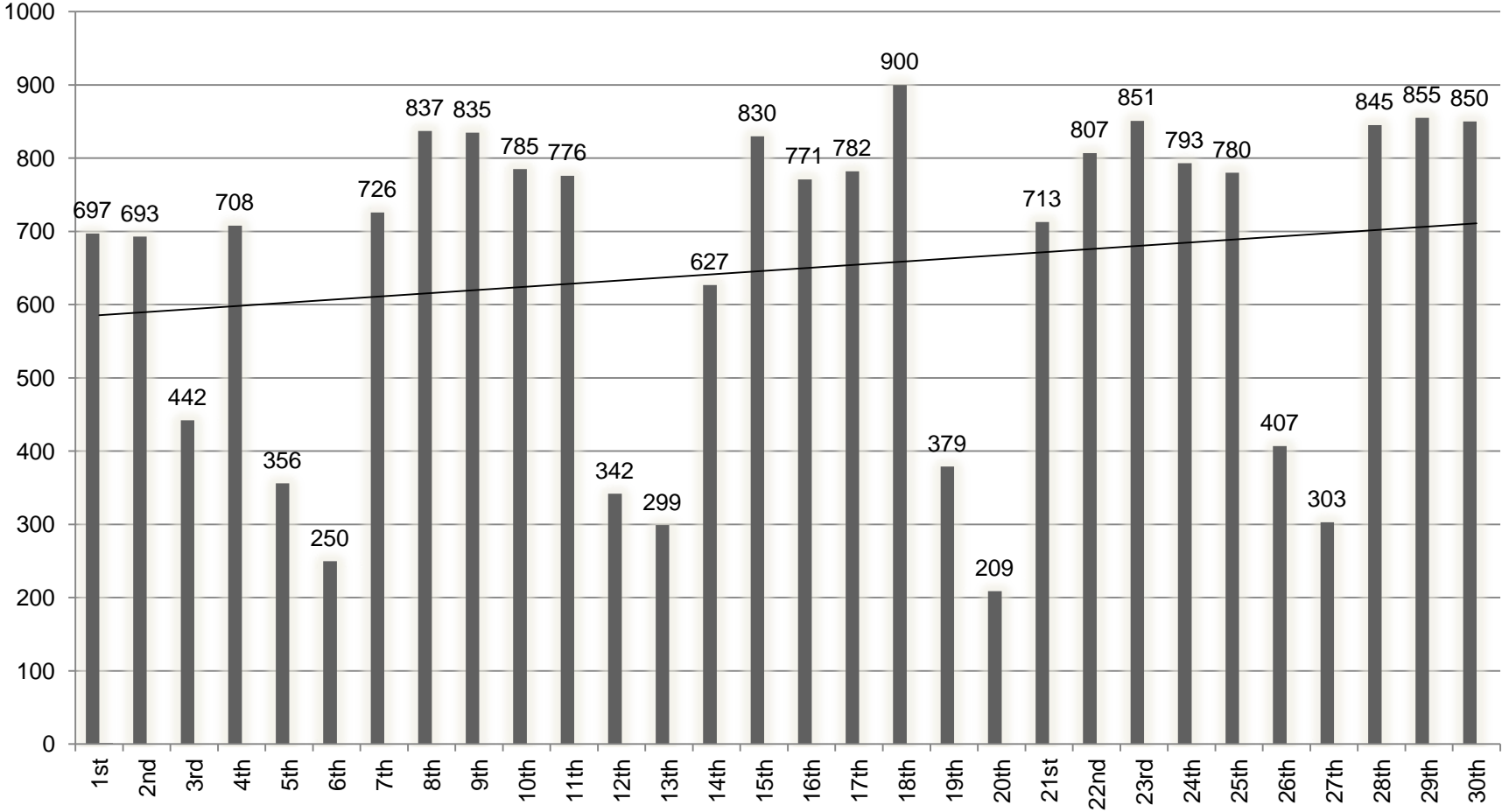
September 2015



September 2015

During the month of September there were 19,448 rentals; rental patterns were mostly affected by weather and commuting patterns with numbers still lowest at the weekends. The rental fluctuations are shown below:

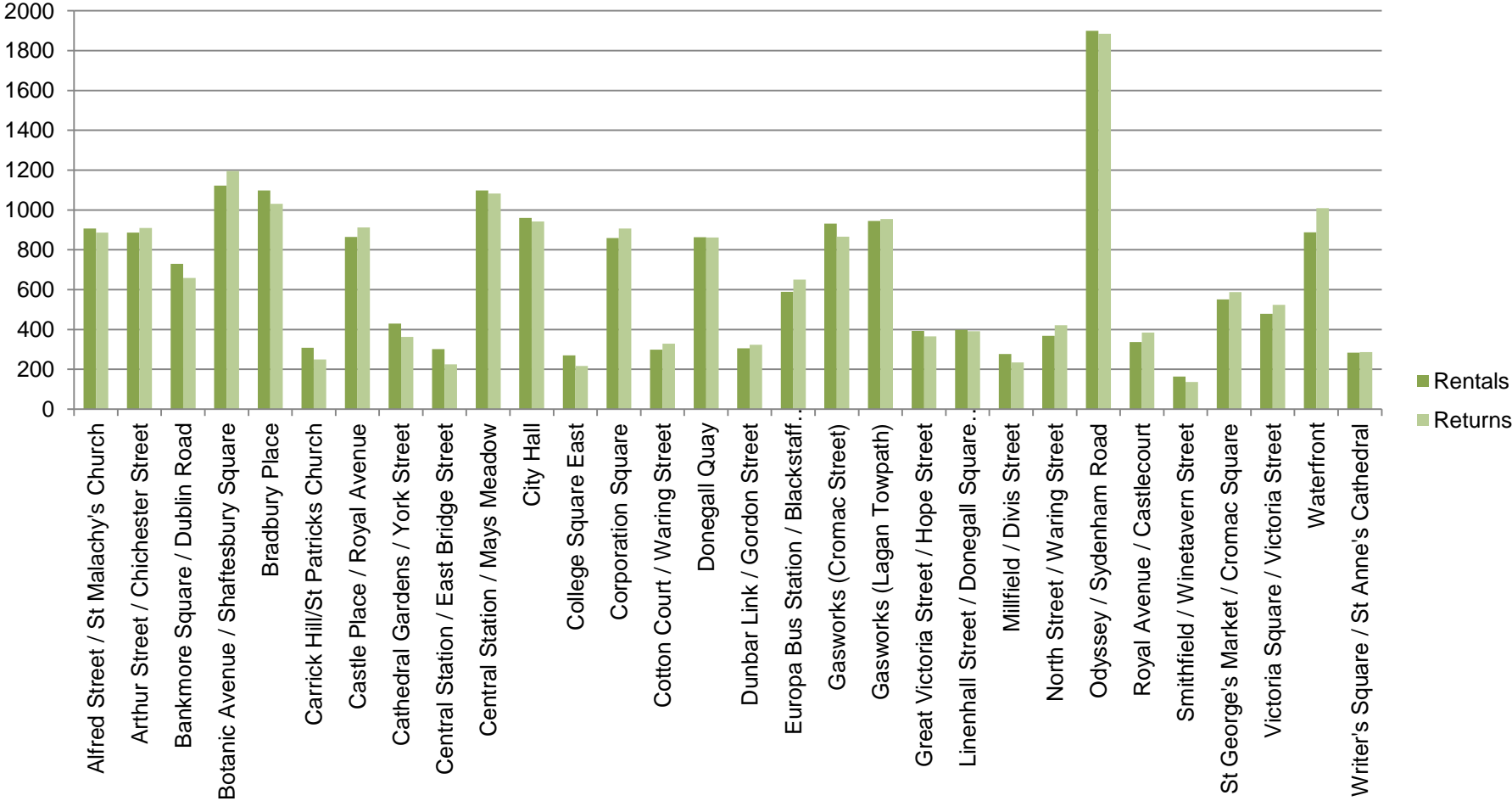
Daily Cycle Hires



September 2015

The most popular stations were 1) Odyssey 2) Bradbury Place 3) Botanic Avenue/Shaftesbury Square as shown below:

Rentals & Returns by Station



September 2015

The total rentals to the end of September were 96,105. The weekly fluctuations of rentals from the launch of the scheme are shown below:

Weekly Cycle Hires YTD

