



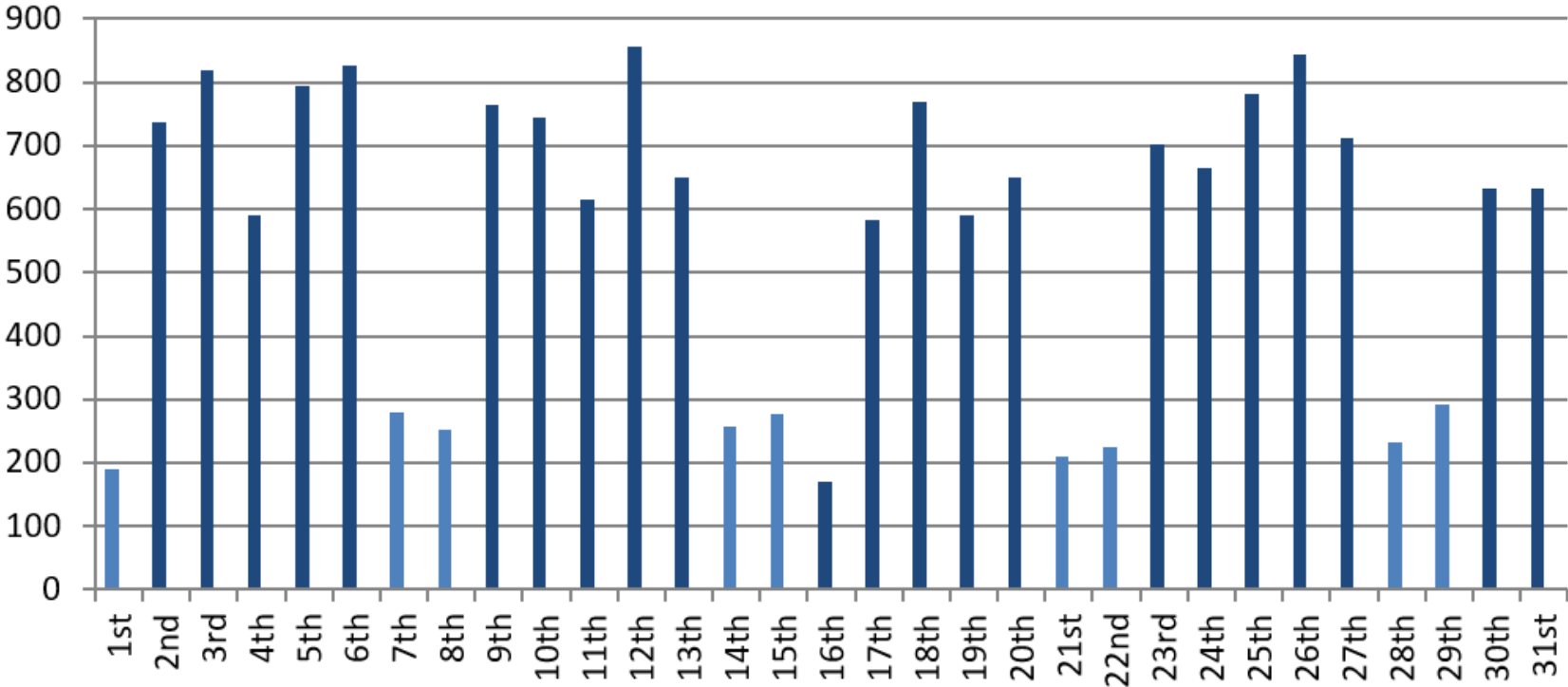
Performance Indicators

October 2017



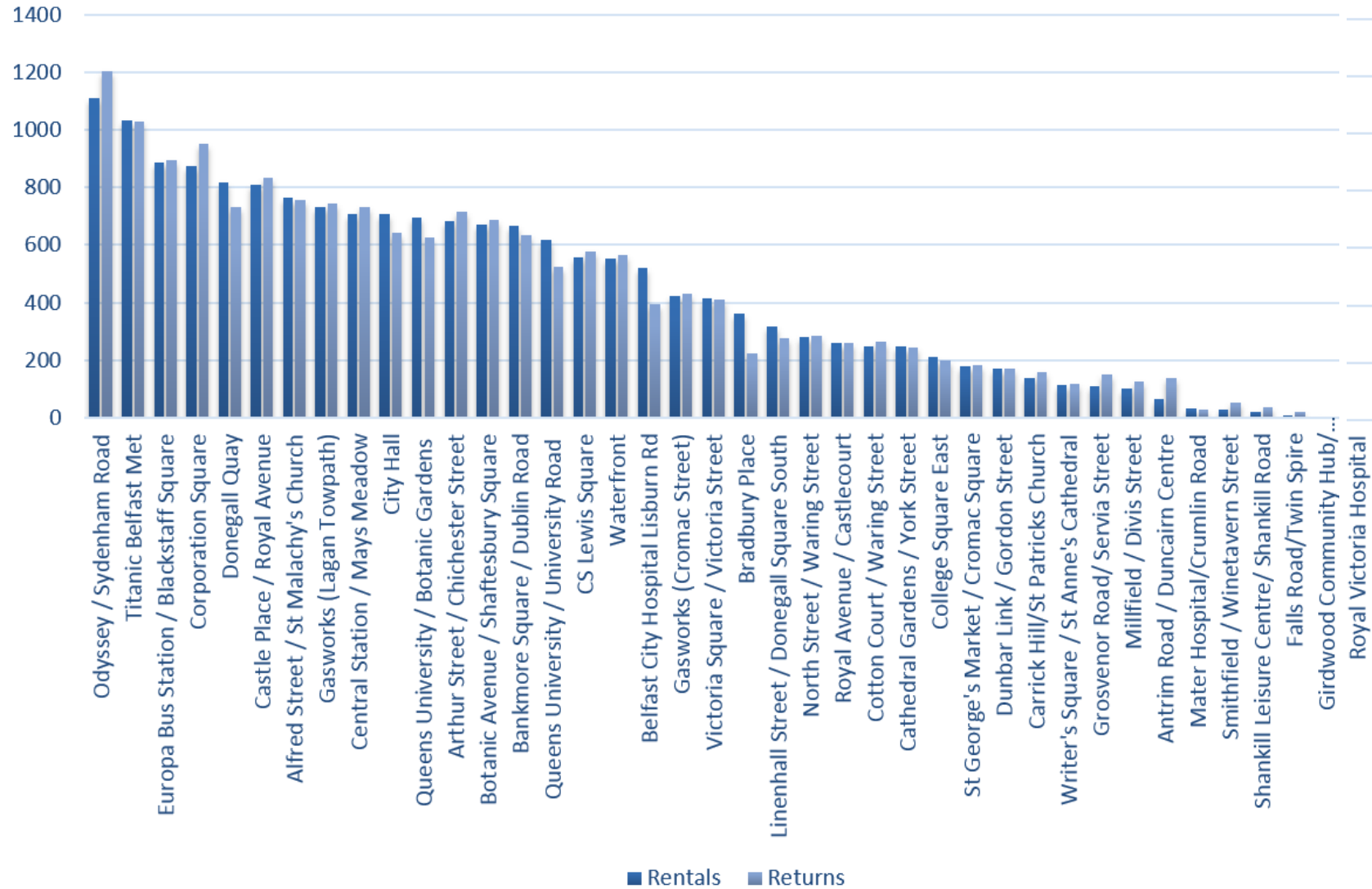
October 2017

During the month of October, there were **17,348** rentals. The rental fluctuations are shown below:



October 2017

The most popular stations in October for renting and returning combined were: (1) Odyssey (2) Titanic (3) Europa/Blackstaff



October 2017

The total rentals to the end of October were **539,705**. The monthly fluctuations of rentals from the launch of the scheme are shown below.

