



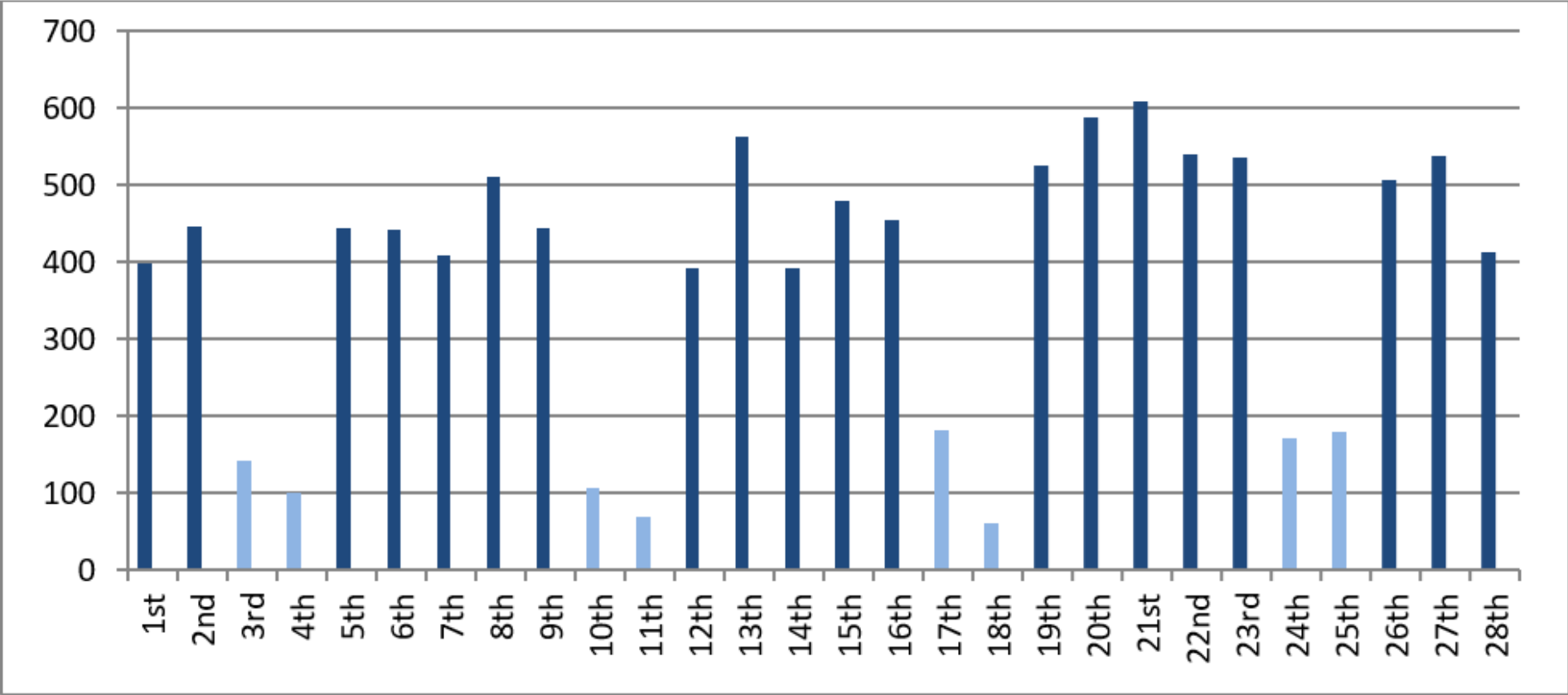
## Performance Indicators

March 2018



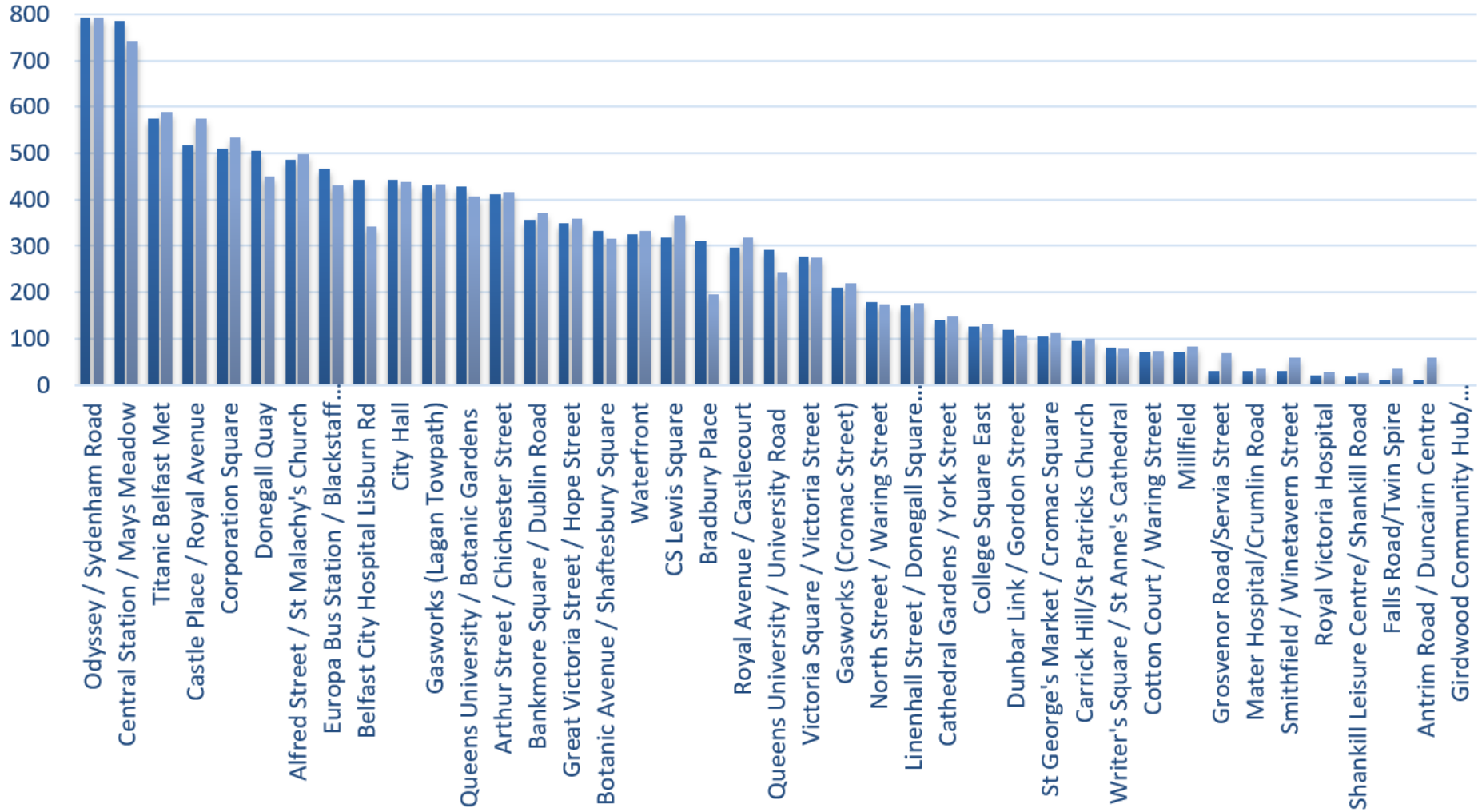
# March 2018

During the month of March, there were 11,204 rentals. The rental fluctuations are shown below:



## March 2018

The most popular stations in March for renting and returning combined were: (1) Odyssey (2) Central Station (3) Titanic



# March 2018

The total rentals to the end of March were **591,459**. The monthly fluctuations of rentals from the launch of the scheme are shown below.

