



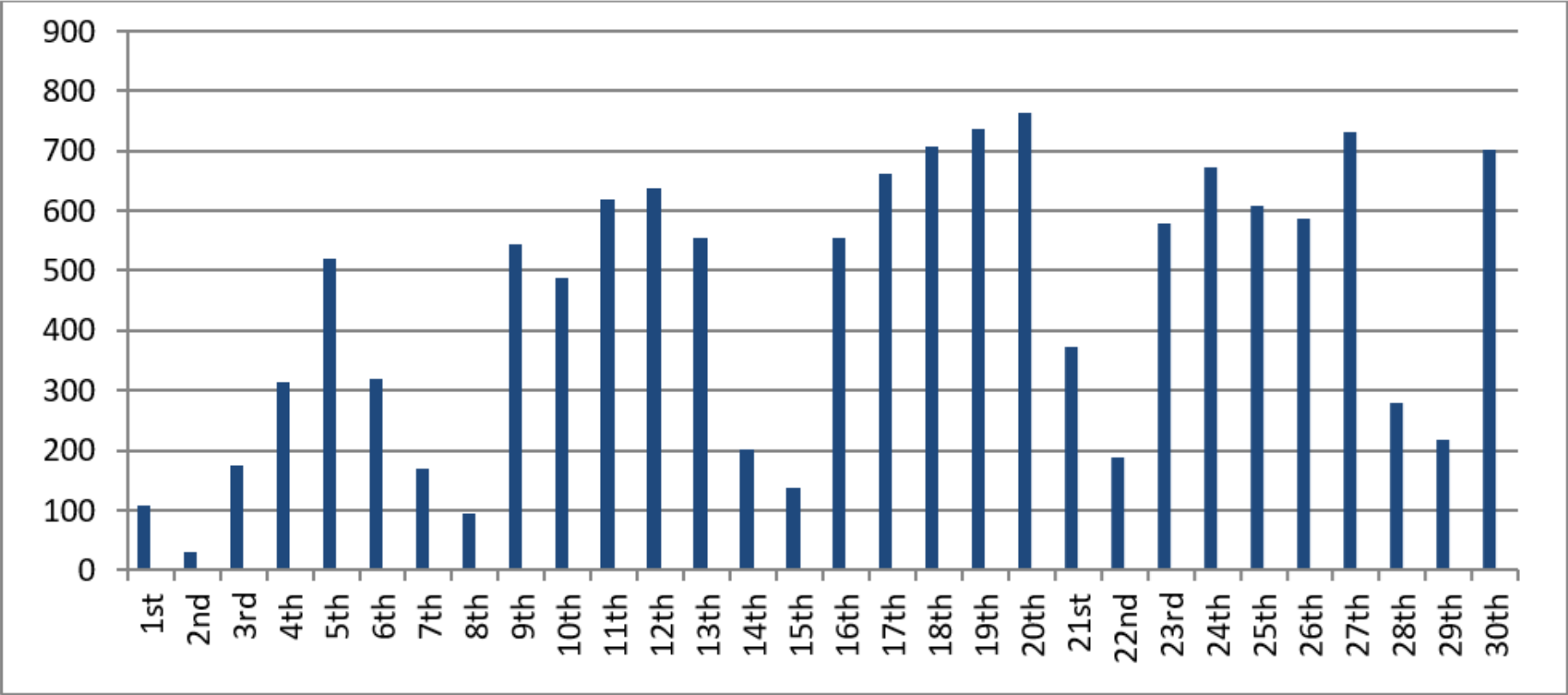
Performance Indicators

April 2018



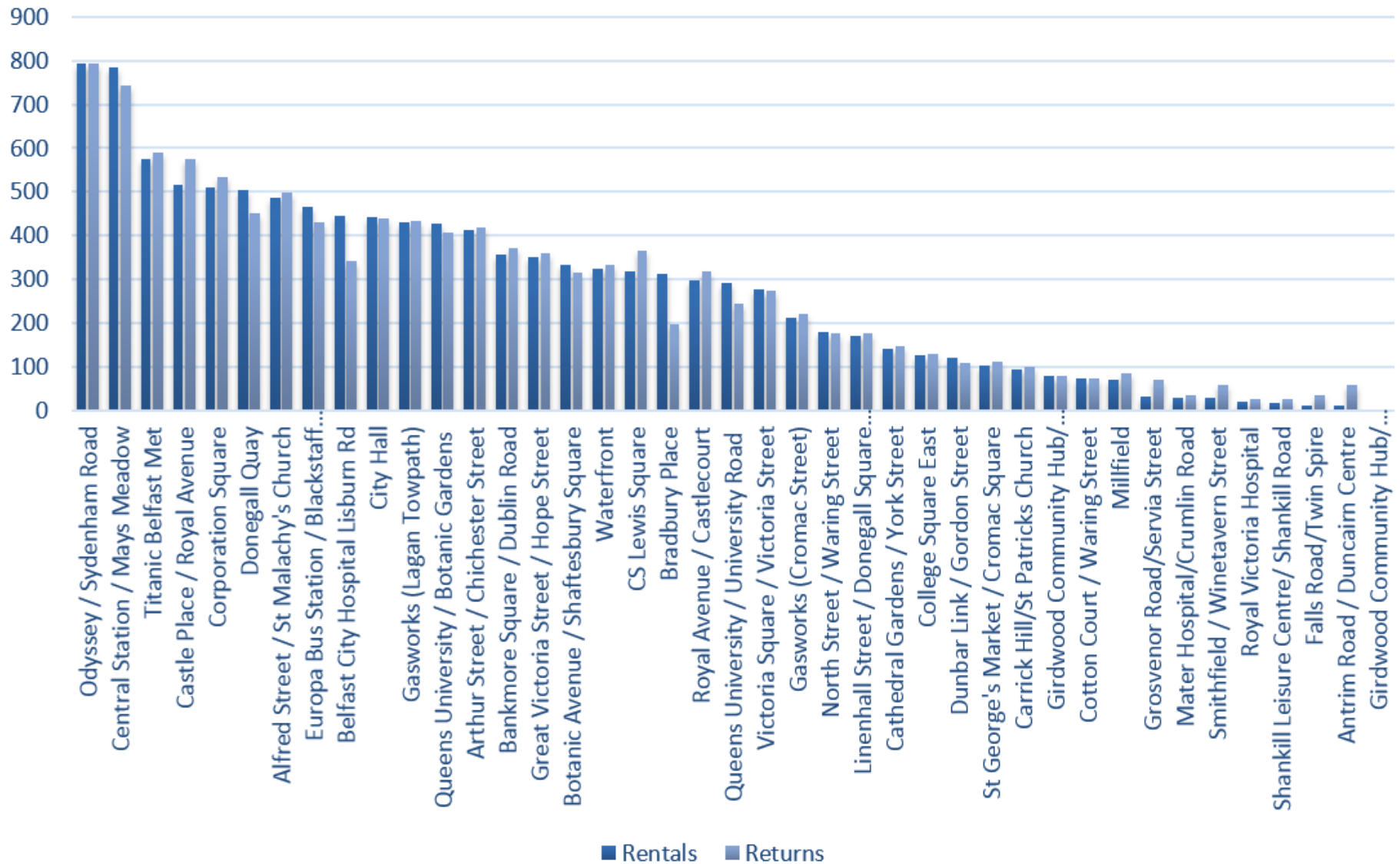
April 2018

During the month of April, there were **13,276** rentals. The rental fluctuations are shown below:



April 2018

The most popular stations in April for renting and returning combined were: (1) Odyssey (2) Central Station (3) Titanic



April 2018

The total rentals to the end of April were **604,735**. The monthly fluctuations of rentals from the launch of the scheme are shown below.

