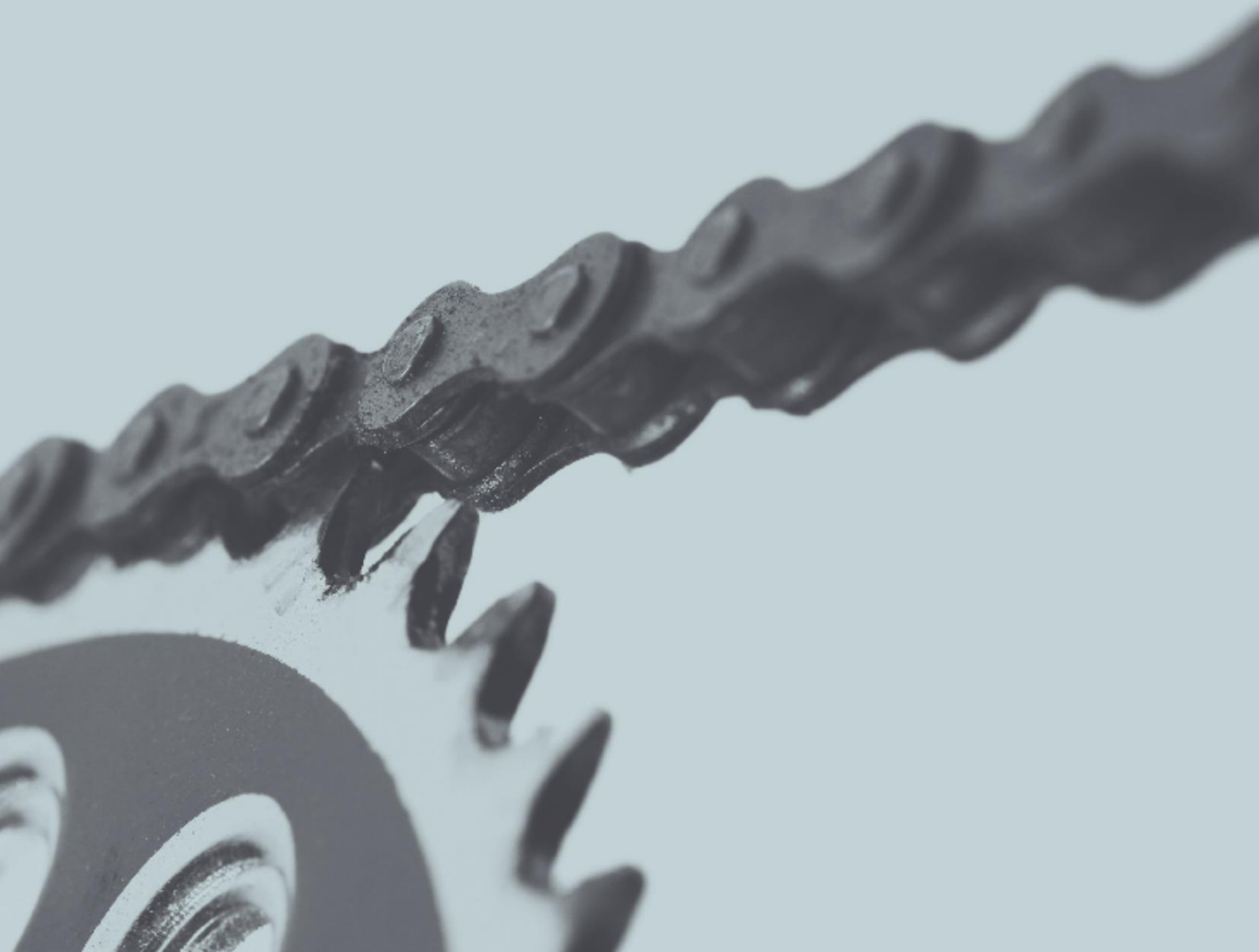


Coca-Cola
zero

belfast
bikes

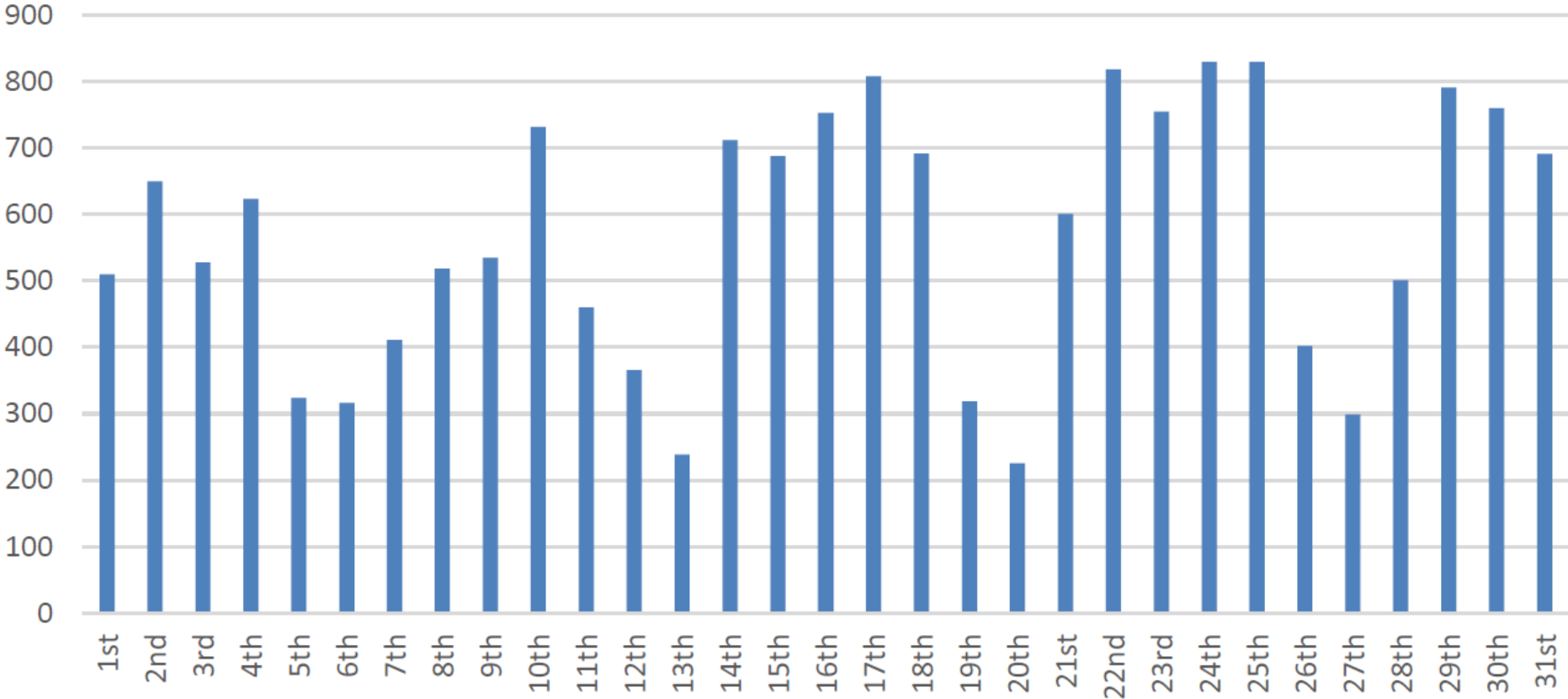
Performance Indicators

May 2018



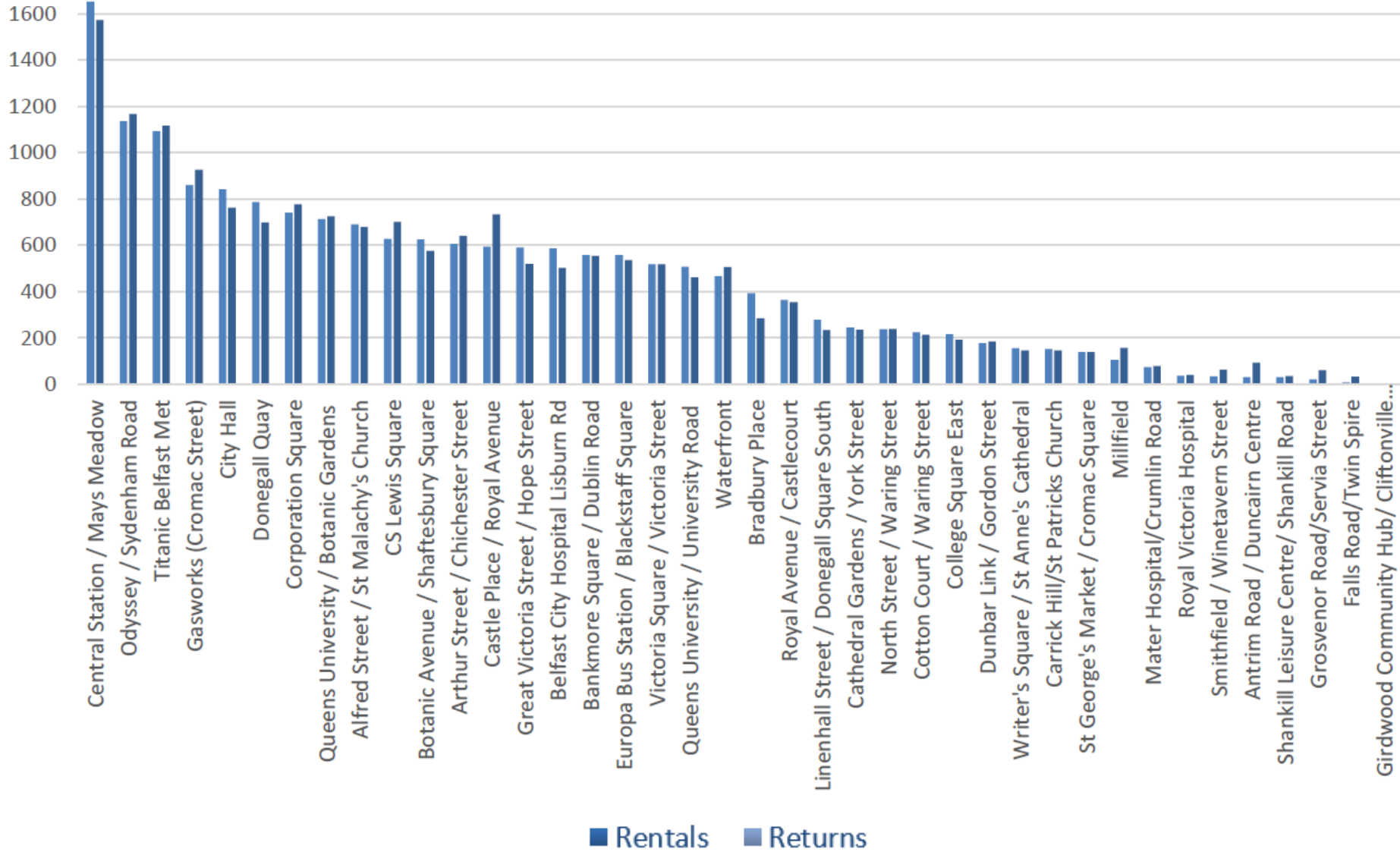
May 2018

During the month of May, there were **17,711** rentals. The rental fluctuations are shown below:



May 2018

The most popular stations in May for renting and returning combined were: (1) Central Station (2) Odyssey (3) Titanic



May 2018

The total rentals to the end of May were **622,594**. The monthly fluctuations of rentals from the launch of the scheme are shown below.

