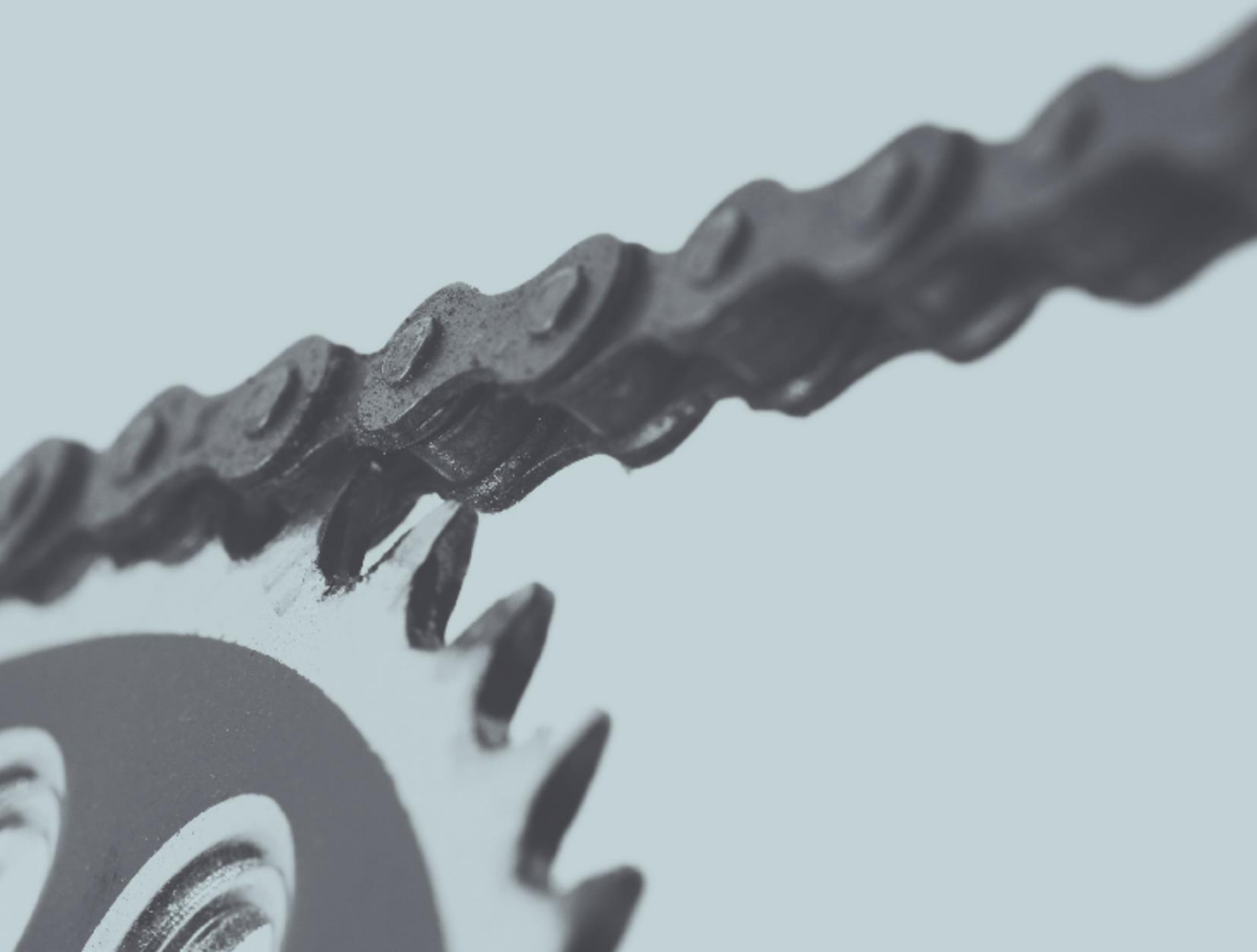




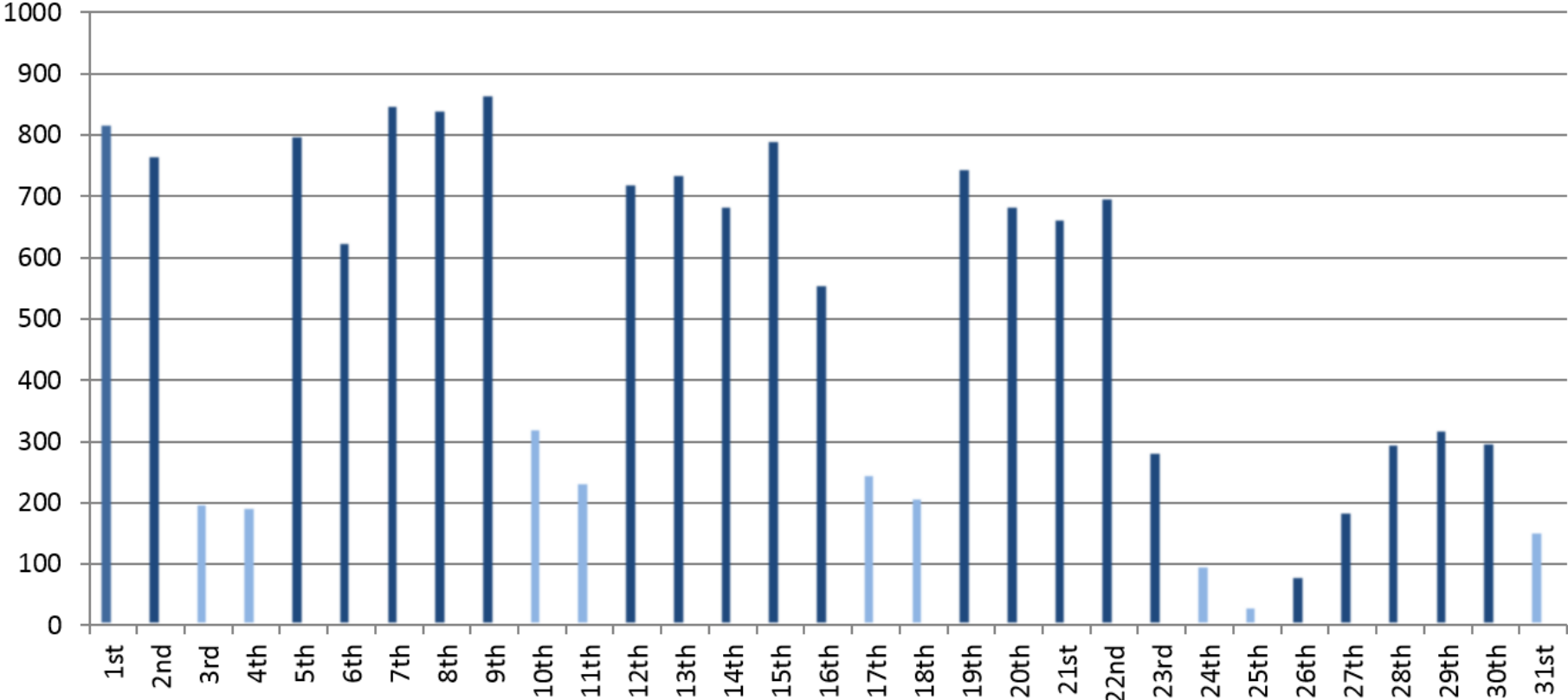
Performance Indicators

December 2016



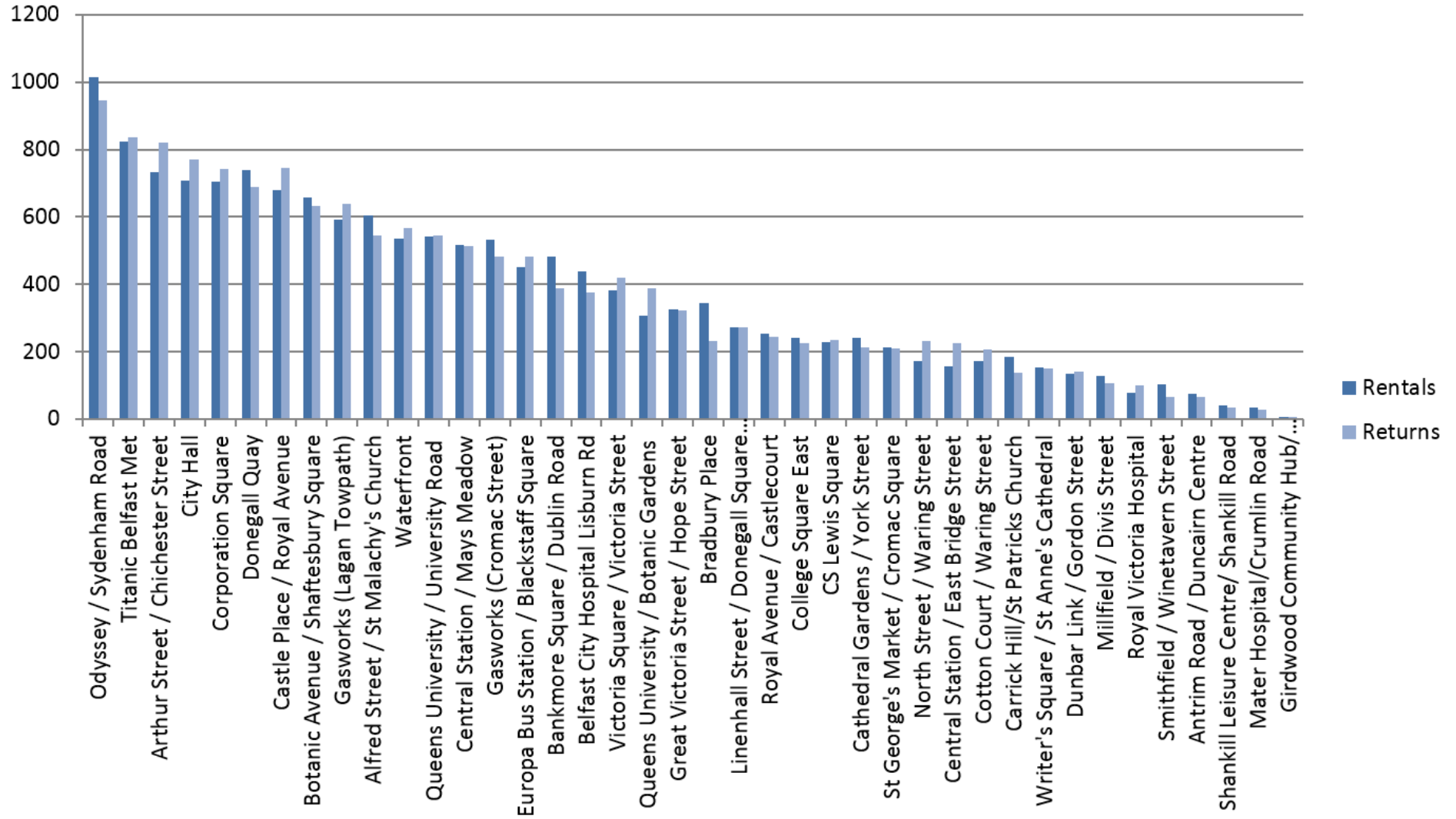
December 2016

During the month of December, there were **15,022** rentals. The rental fluctuations are shown below:



December 2016

The most popular stations in December for renting and returning combined were: (1) Odyssey (2) Titanic (3) Arthur Street



December 2016

The total rentals to the end of December were **354,580**. The monthly fluctuations of rentals from the launch of the scheme are shown below.

