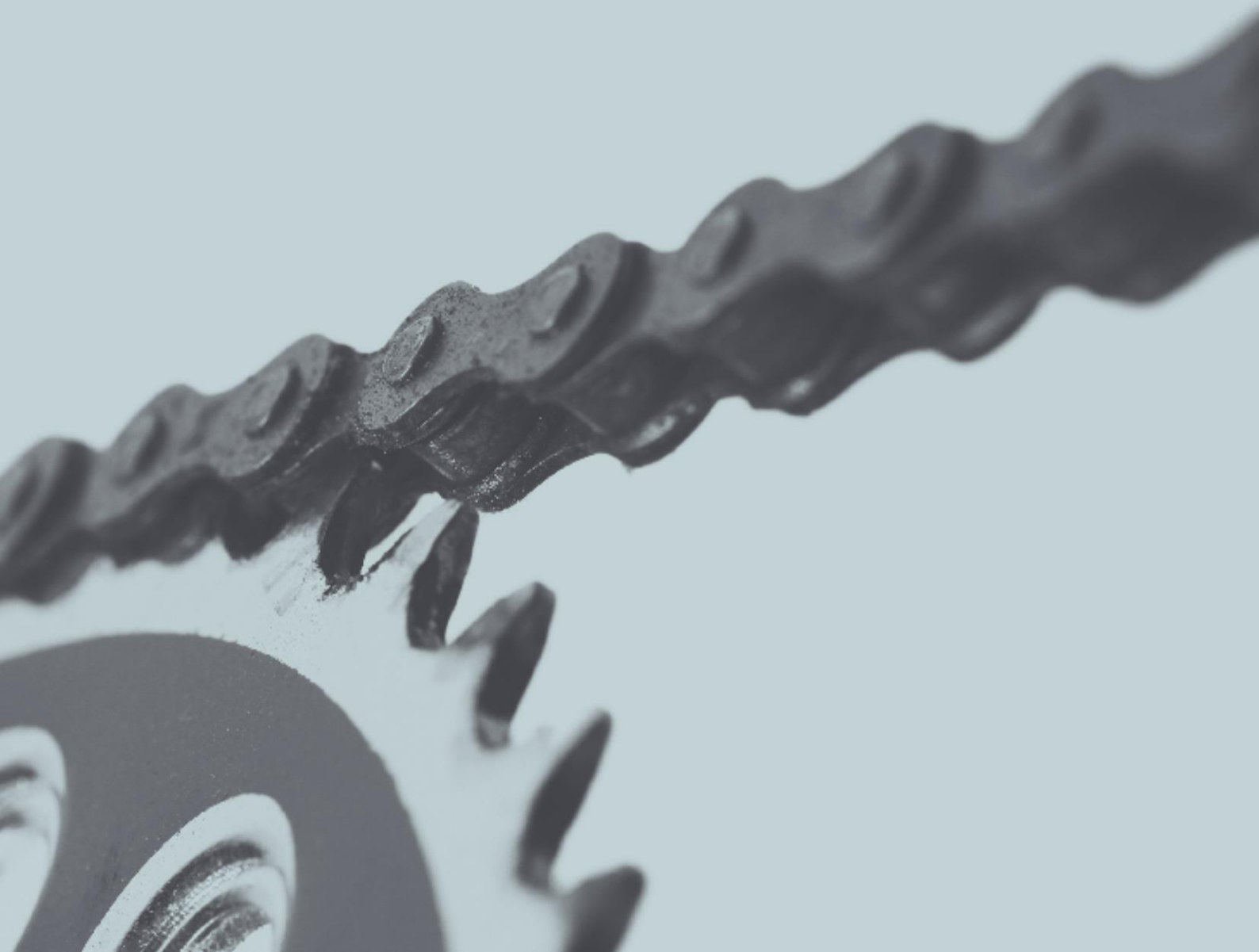




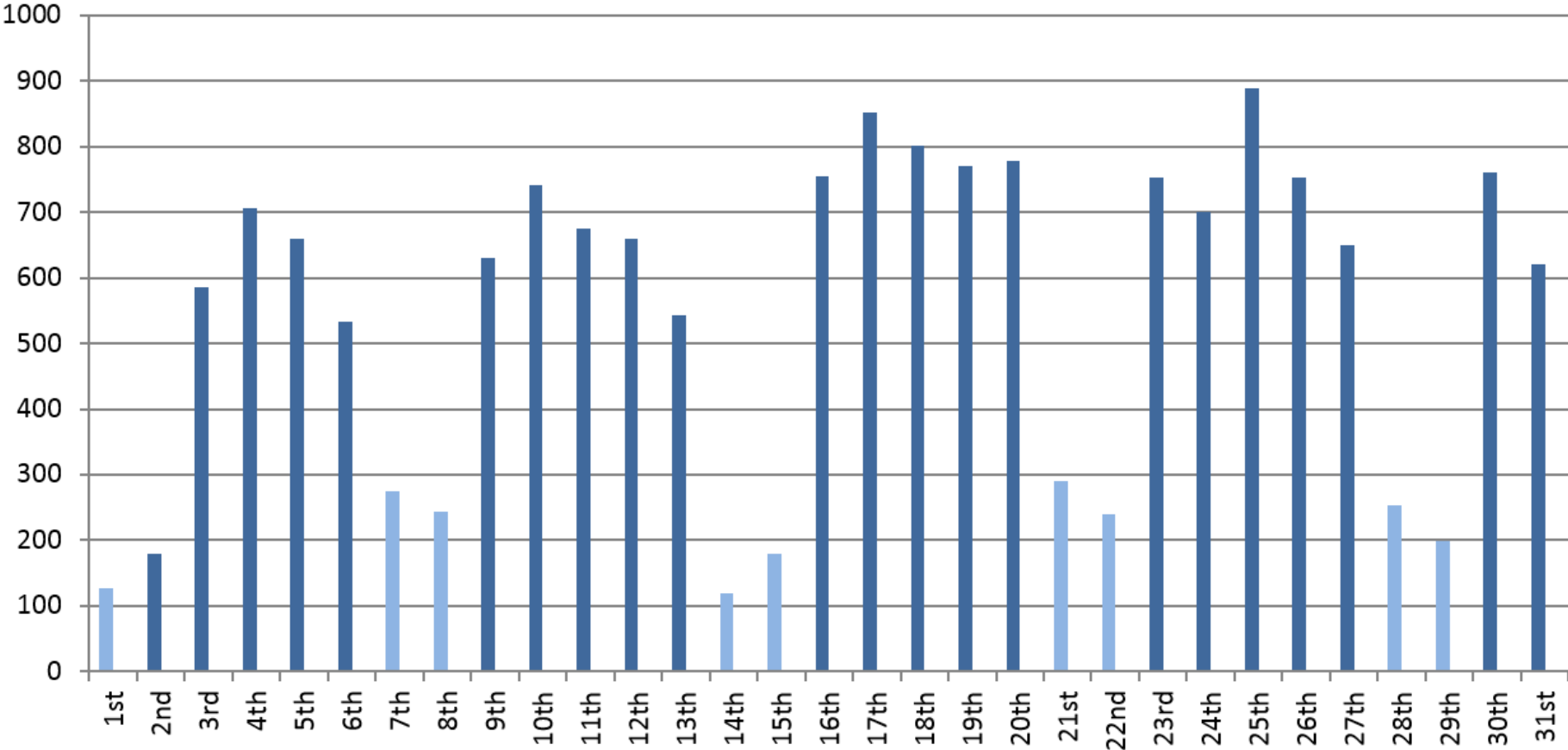
Performance Indicators

January 2017



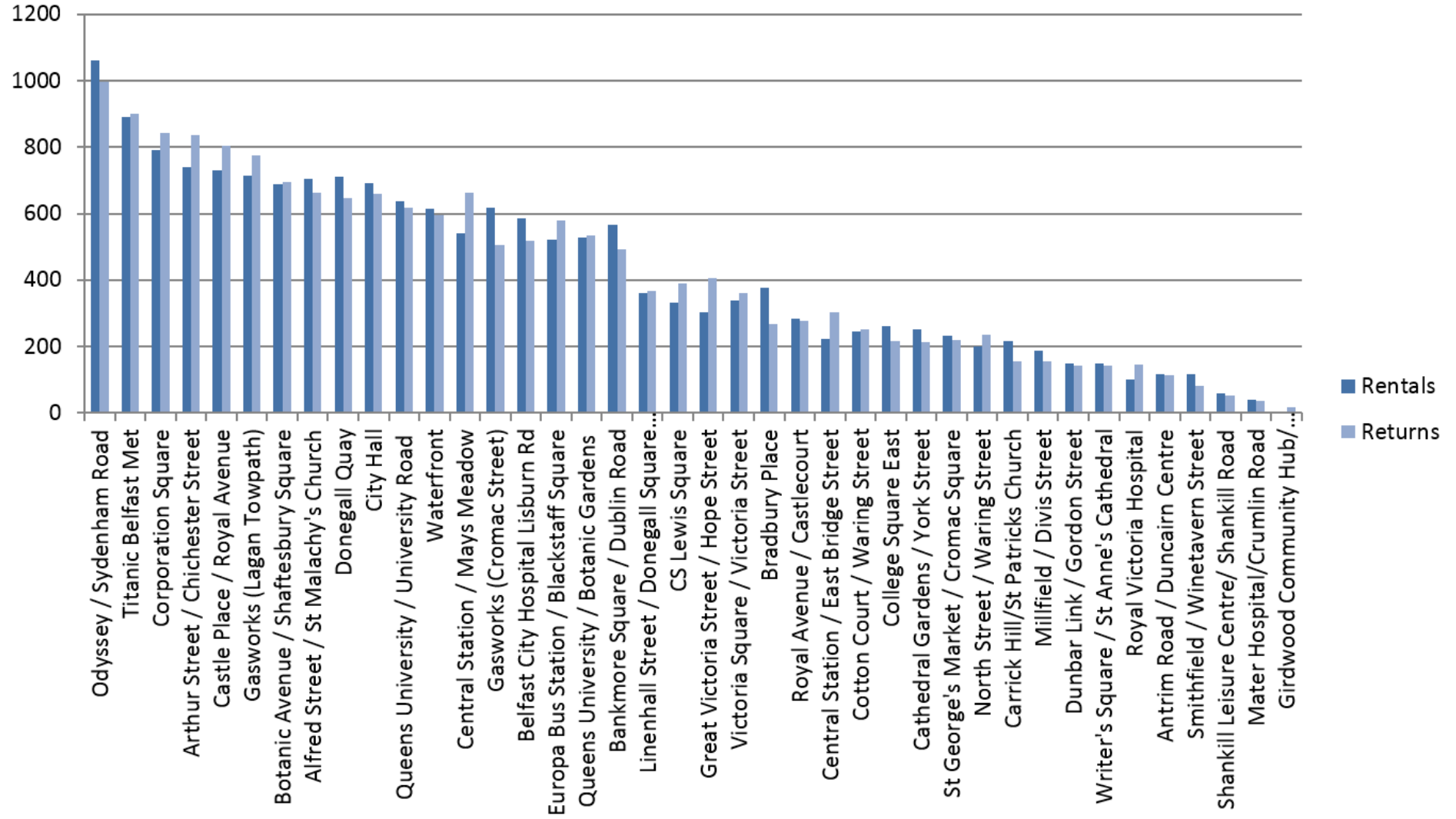
January 2017

During the month of January, there were **16,920** rentals. The rental fluctuations are shown below:



January 2017

The most popular stations in January for renting and returning combined were: (1) Odyssey (2) Titanic (3) Corporation Square



January 2017

The total rentals to the end of January were **371,500**. The monthly fluctuations of rentals from the launch of the scheme are shown below.

