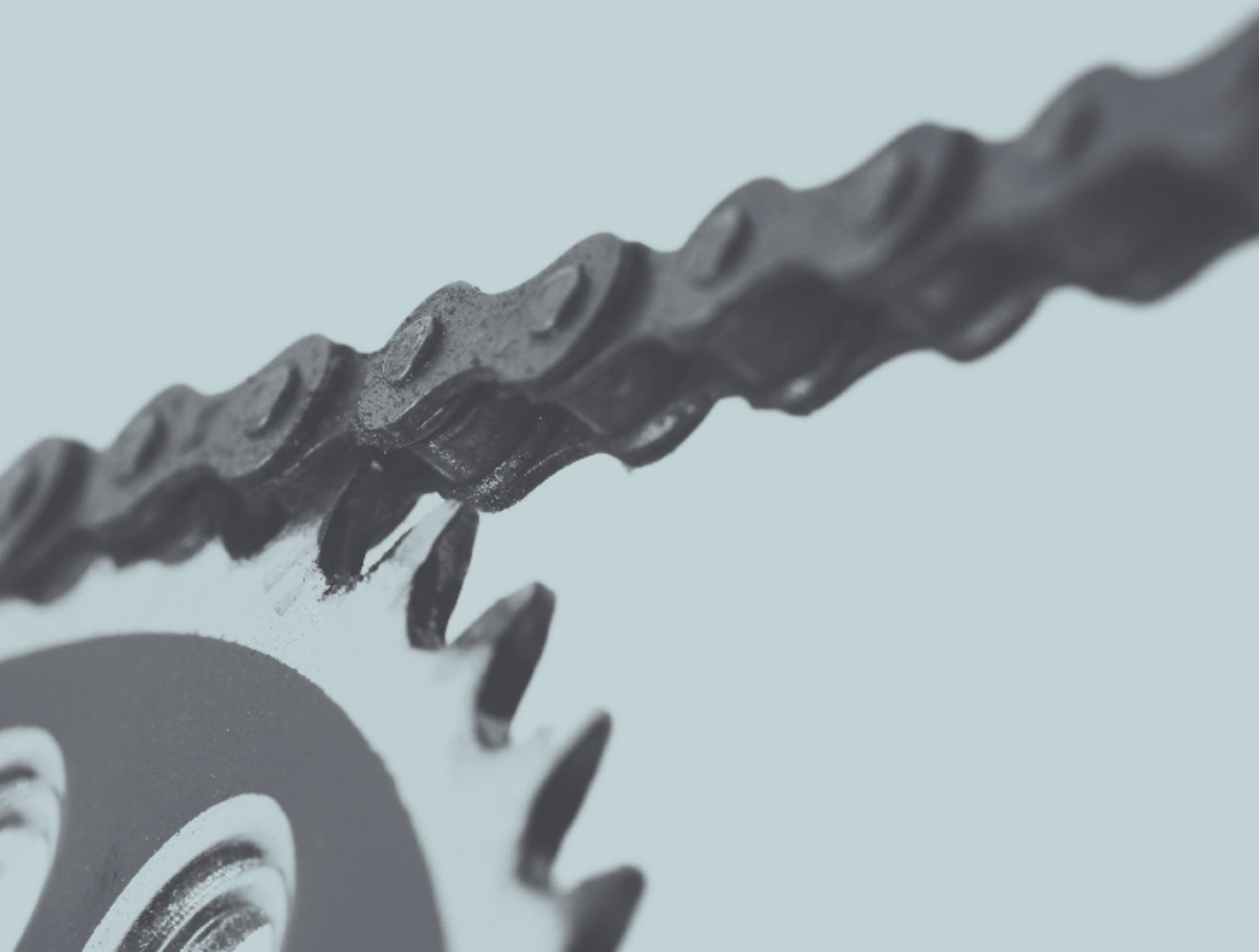




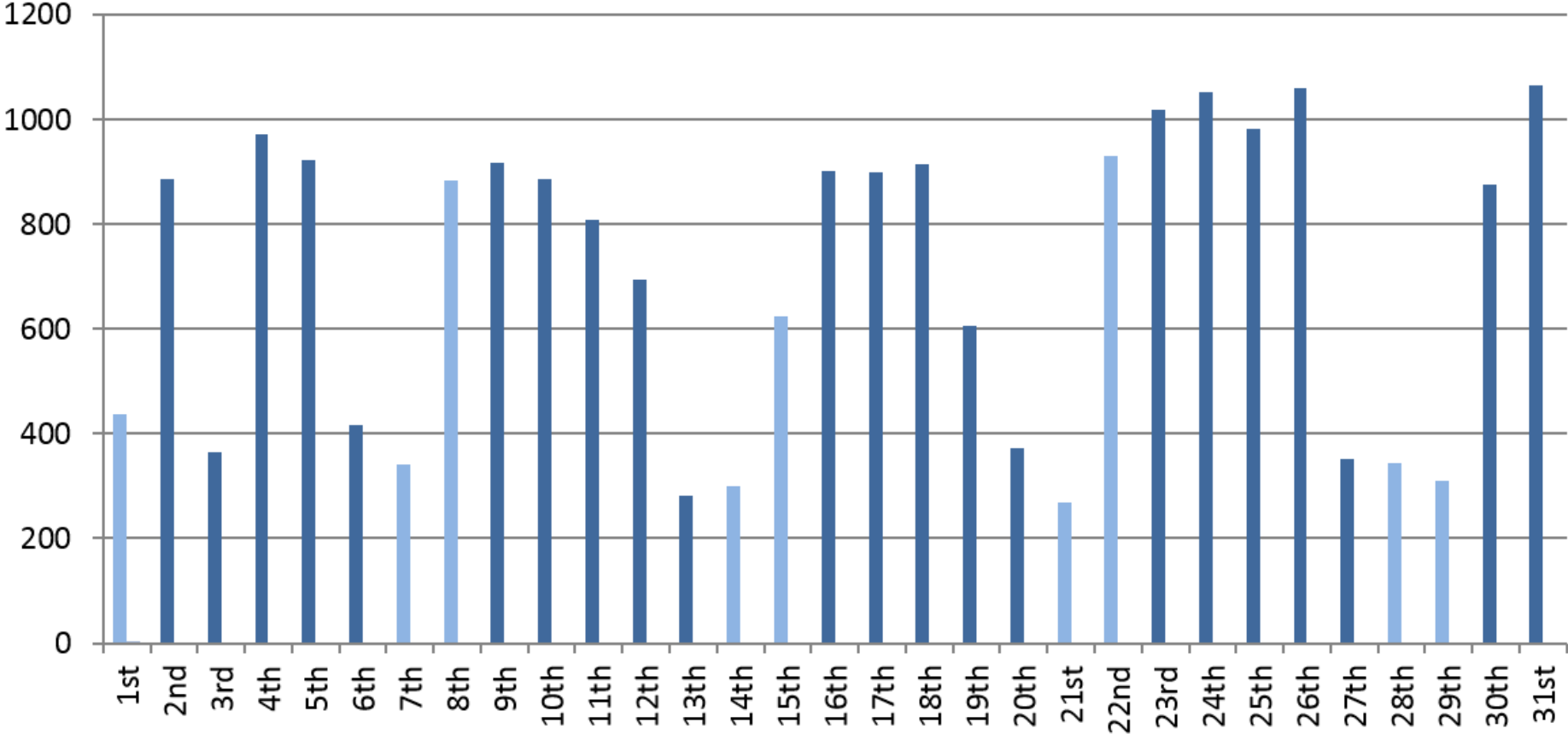
Performance Indicators

May 2017



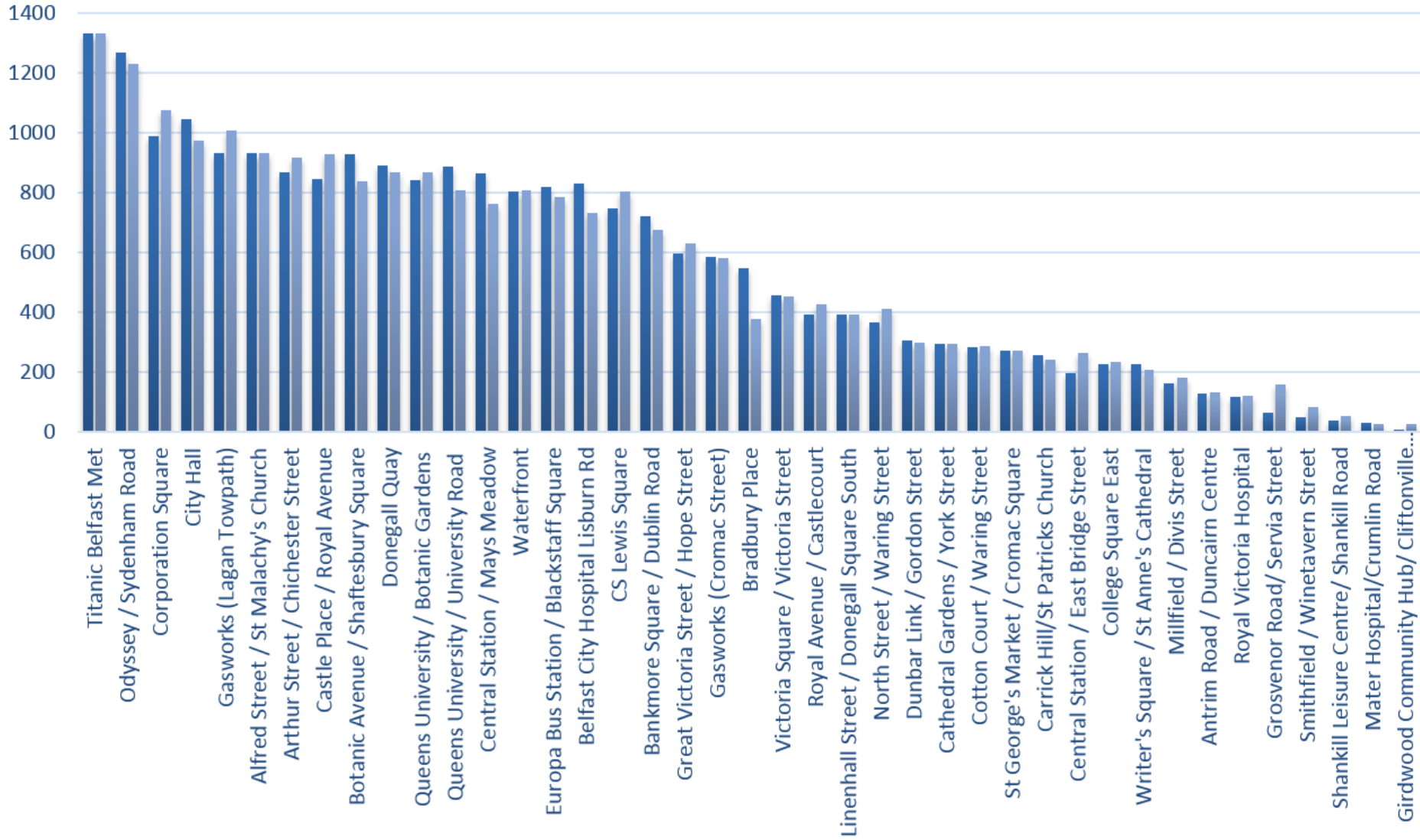
May 2017

During the month of May, there were **21,689** rentals. The rental fluctuations are shown below:



May 2017

The most popular stations in May for renting and returning combined were: (1) Titanic (2) Odyssey (3) Corporation Square



May 2017

The total rentals to the end of May were **445,201**. The monthly fluctuations of rentals from the launch of the scheme are shown below.

Cycle Hires

