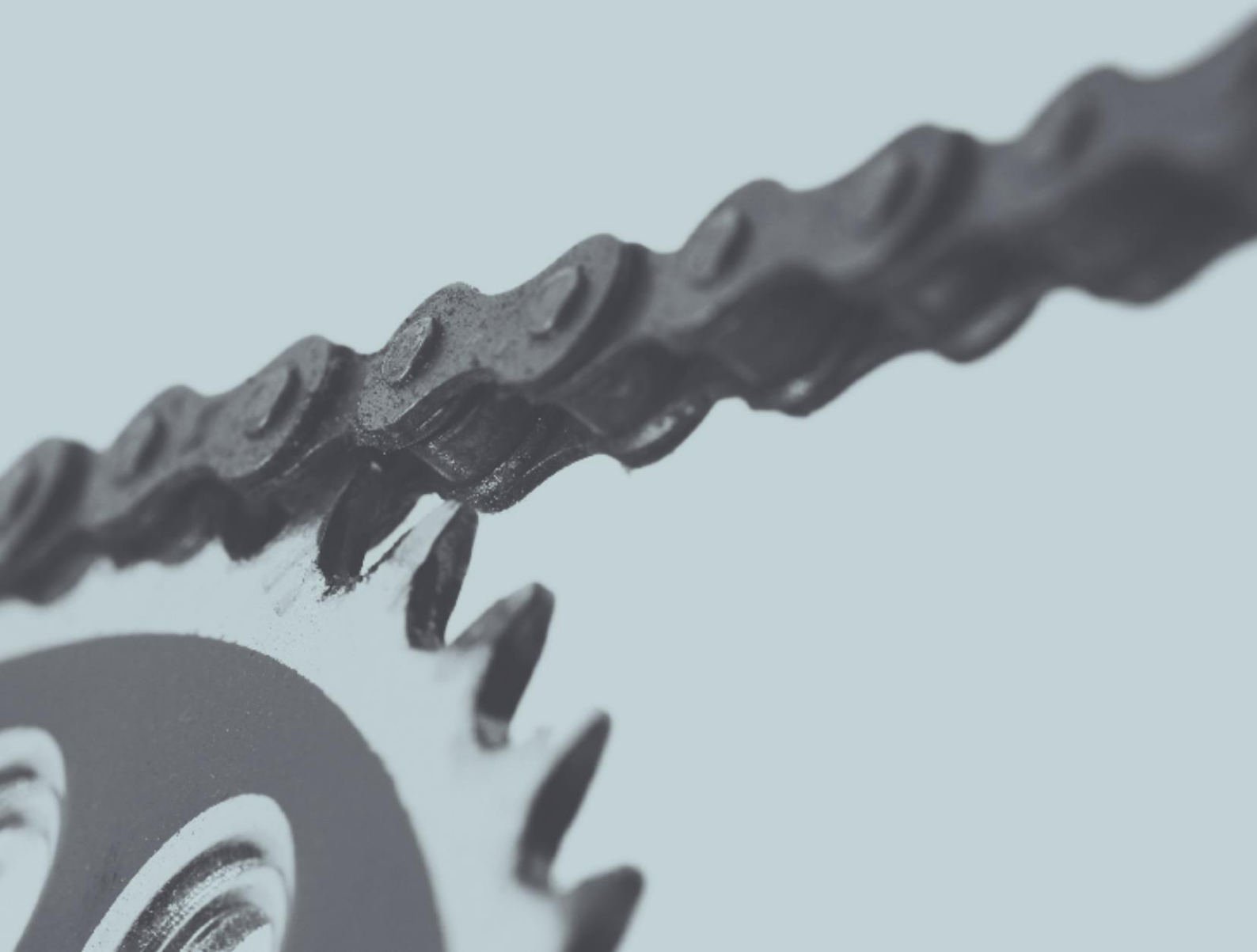




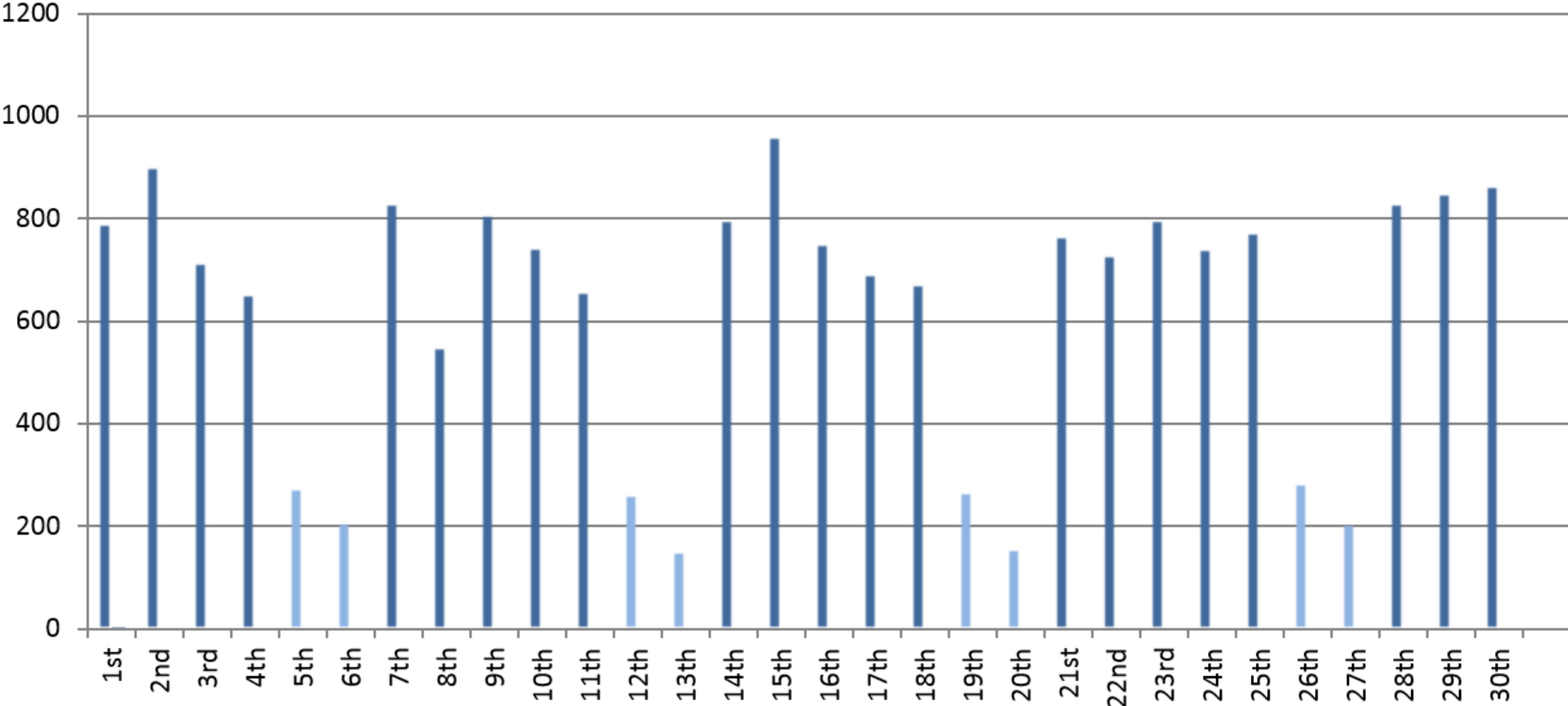
Performance Indicators

November 2016



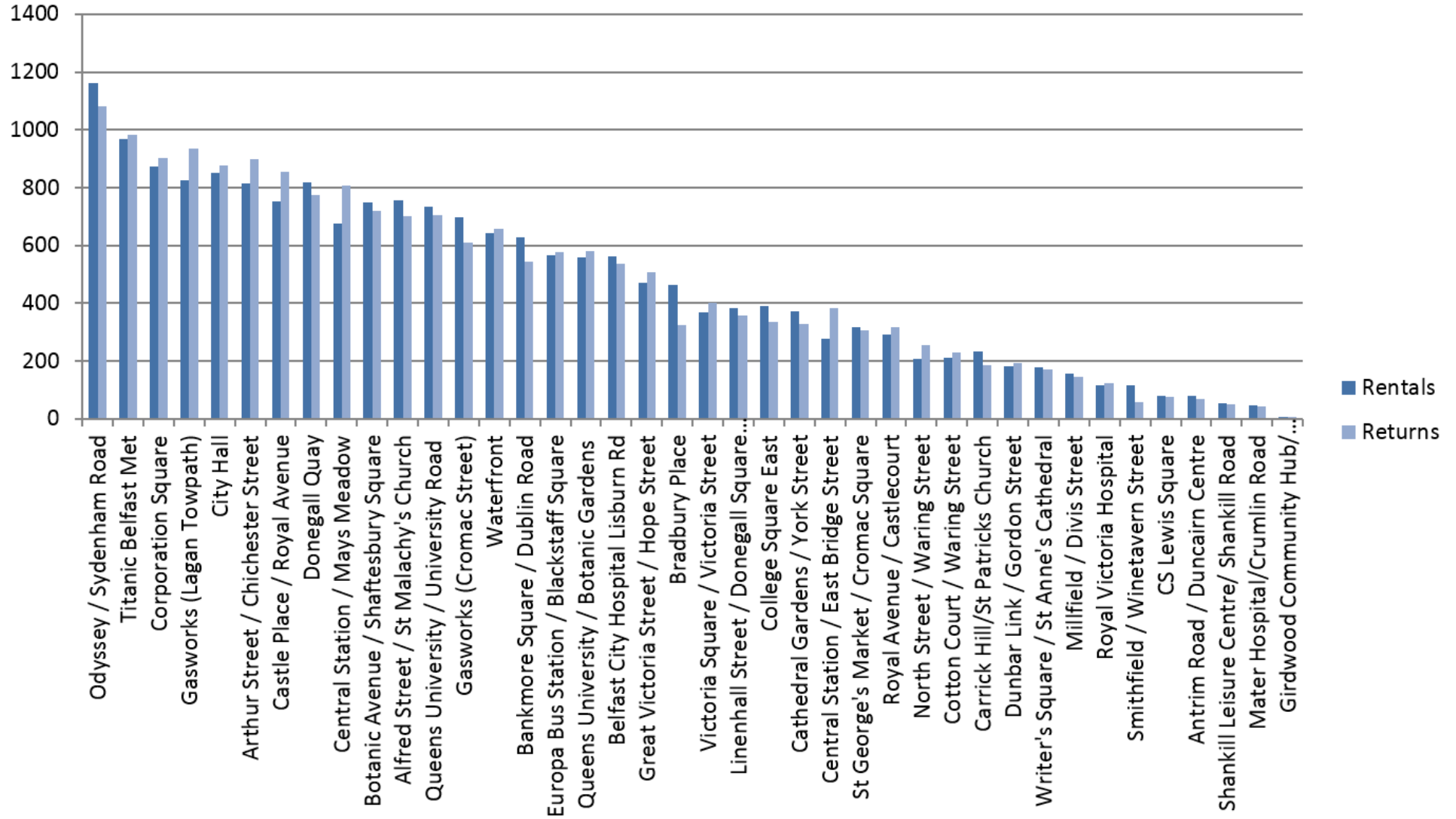
November 2016

During the month of November, there were **18,676** rentals. The rental fluctuations are shown below:



November 2016

The most popular stations in November for renting and returning combined were: (1) Odyssey, (2) Titanic, (3) Corporation Square



November 2016

The total rentals to the end of November were **339,558**. The monthly fluctuations of rentals from the launch of the scheme are shown below:

