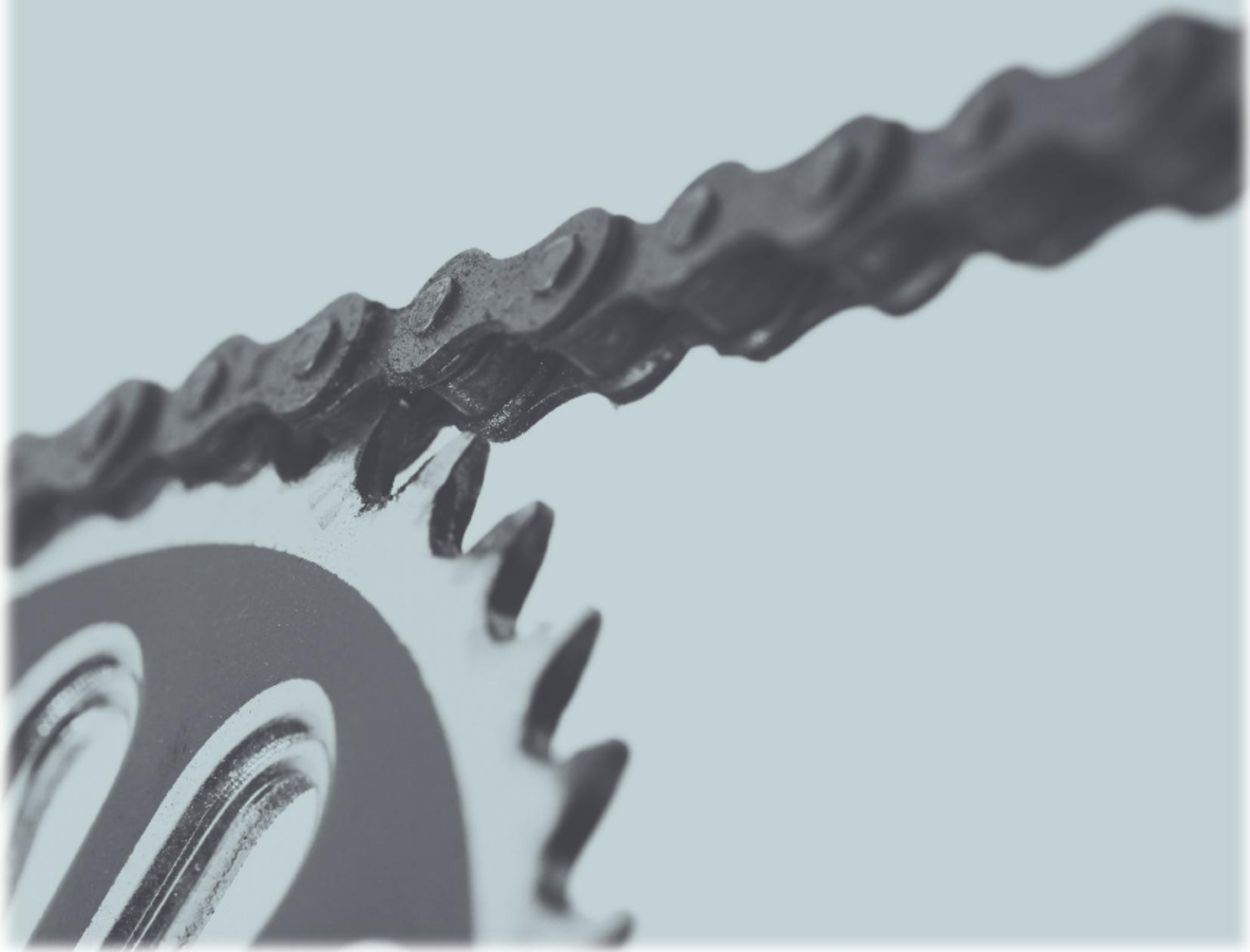


Coca-Cola
zero

 belfast
bikes

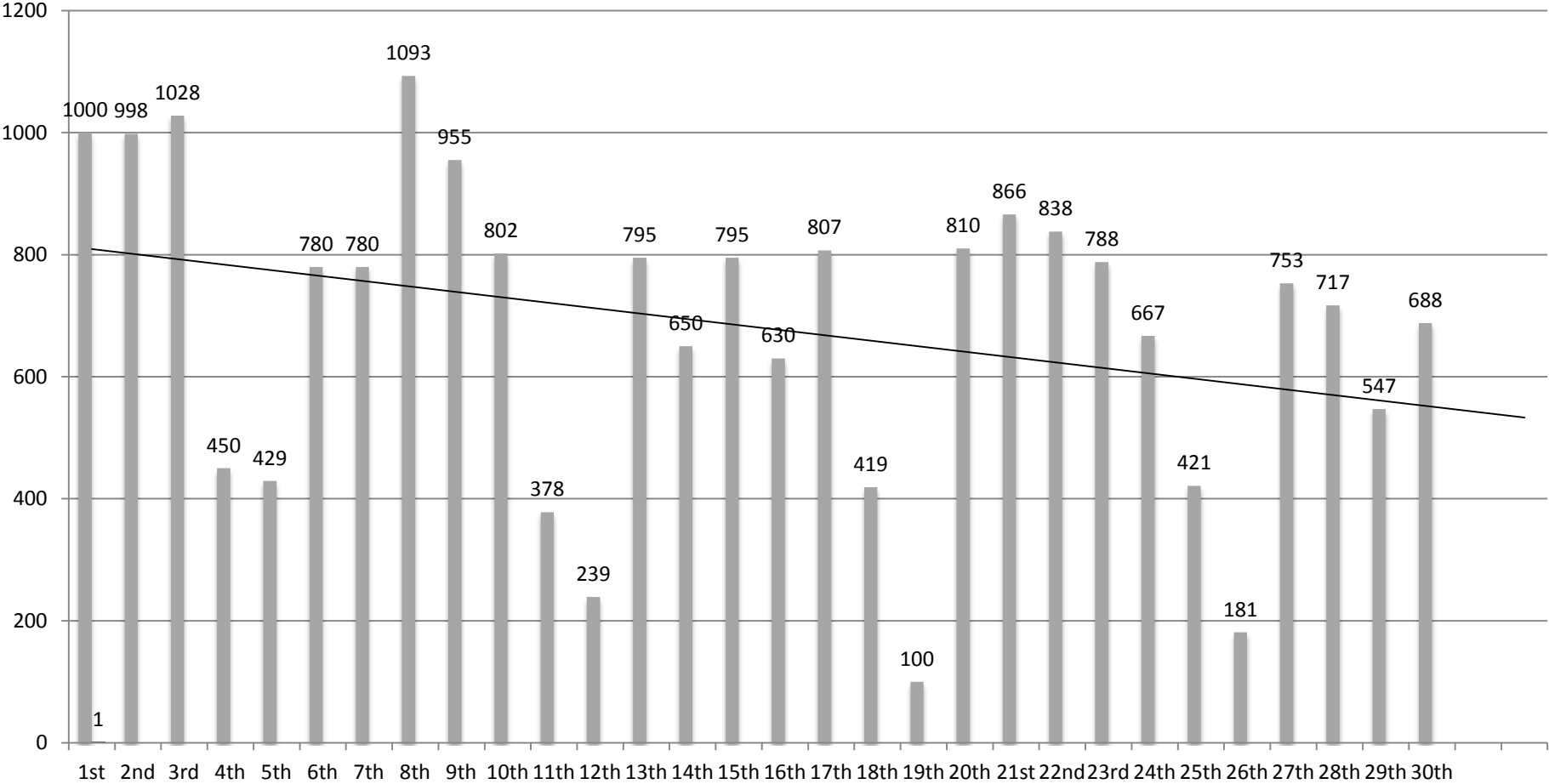
Performance Indicators
June 2016



June 2016

During the month of June there were 20,404 rentals; the third busiest month to date exceeded by June 2015 and May 2016. Rental patterns mostly affected by weather and commuting. The rental fluctuations are shown below:

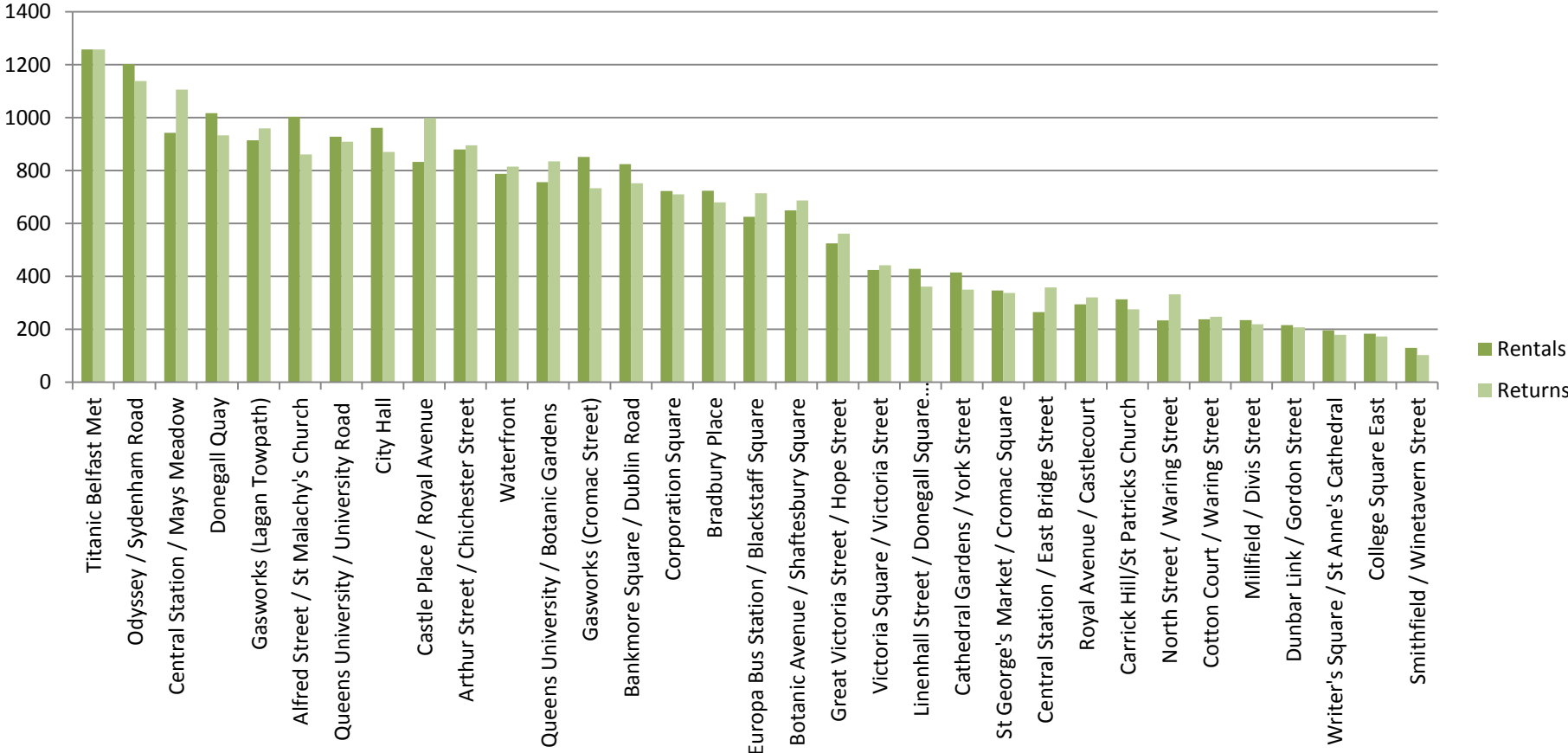
Daily Cycle Hires



June 2016

The most popular stations during the month of June for renting and returning combined were 1) Titanic Belfast, 2) Odyssey, 3) Central Station Mays Meadow as shown below:

Rentals and Returns by Station



June 2016

The total rentals to the end of June were 237,416. The monthly fluctuations of rentals from the launch of the scheme are shown below:

Monthly Cycle Hires YTD

