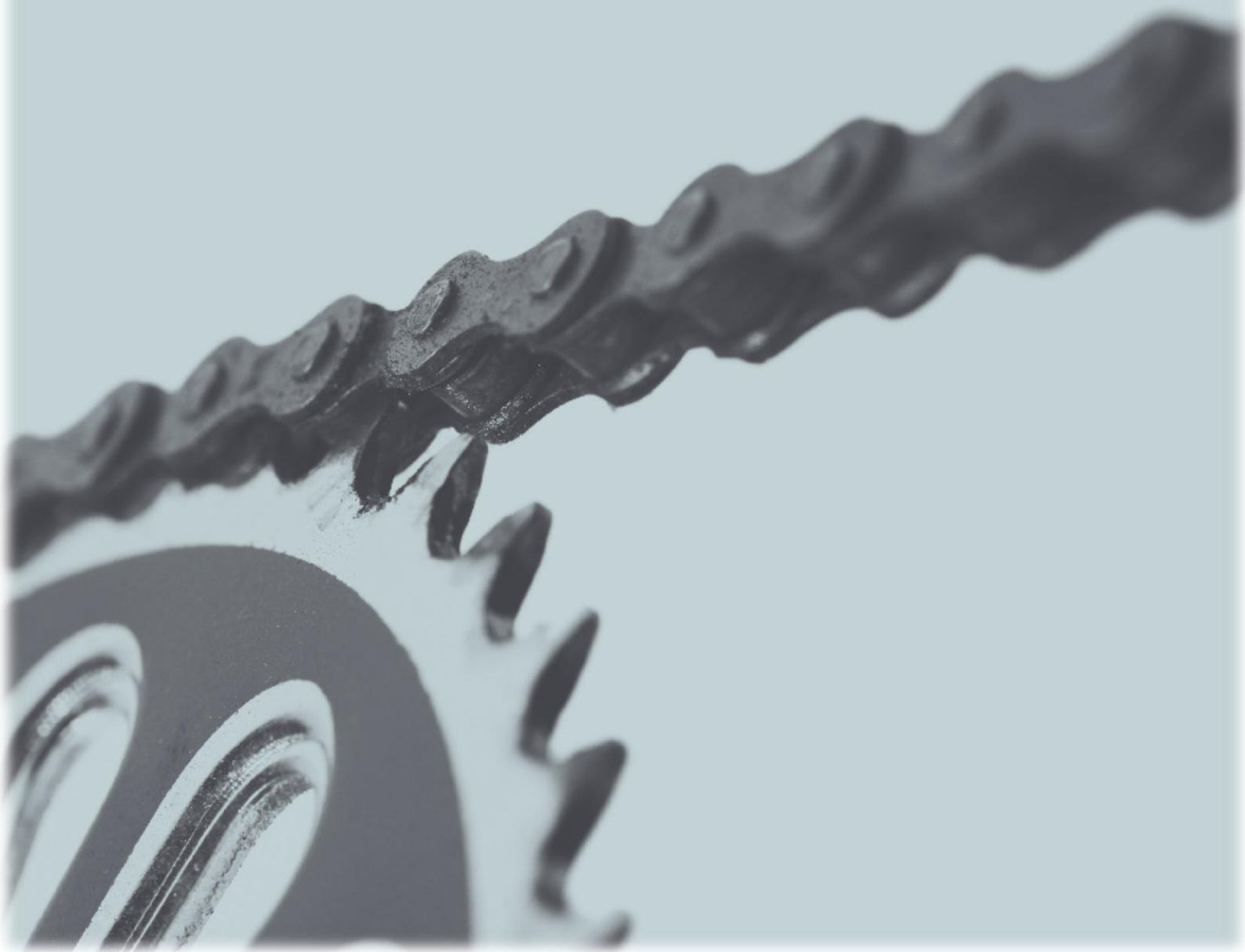


*Coca-Cola*  
zero

 belfast  
bikes

Performance Indicators

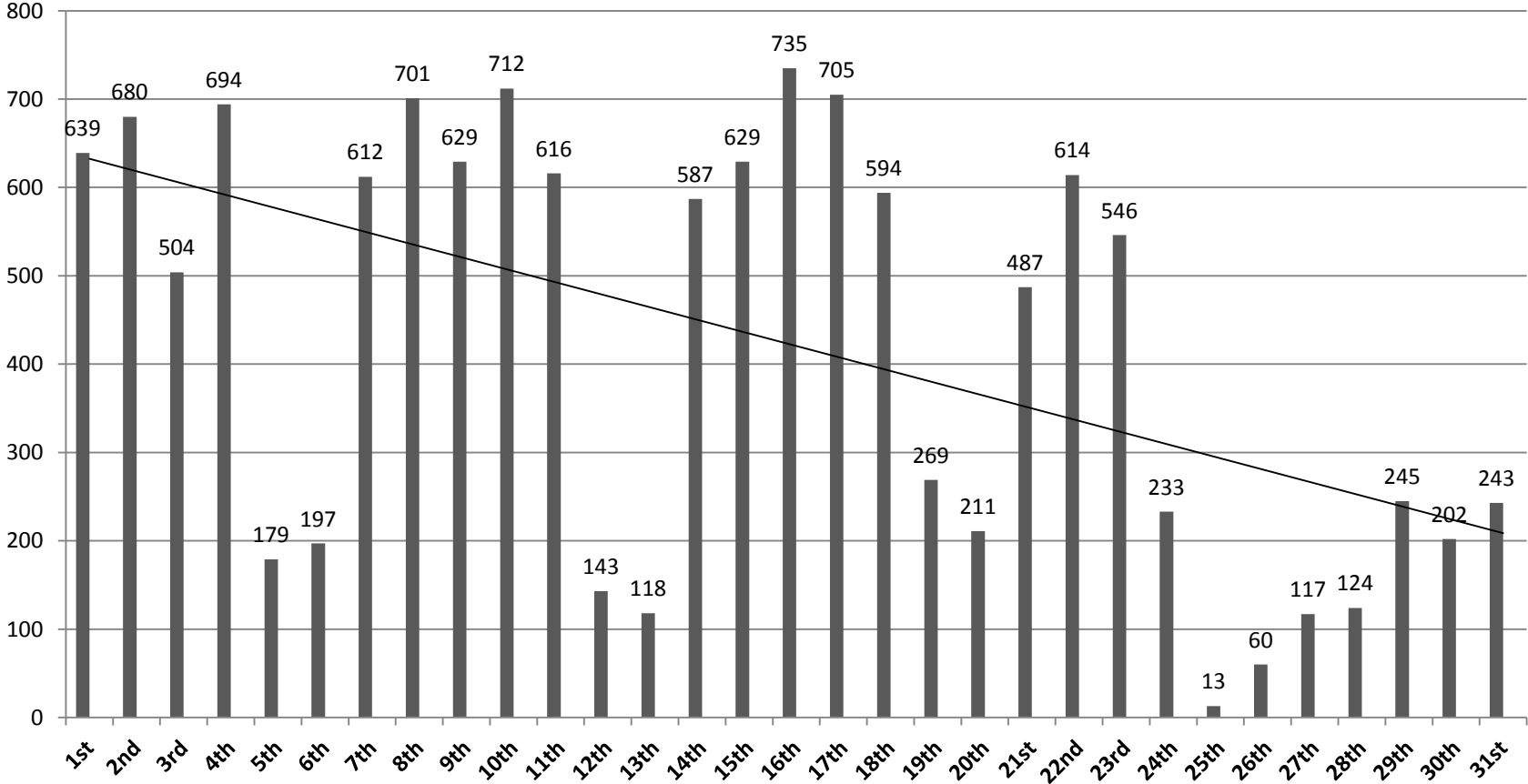
December 2015



# December 2015

During the month of December there were 13, 038 rentals; rental patterns were mostly affected by weather and commuting patterns and public holidays. The rental fluctuations are shown below:

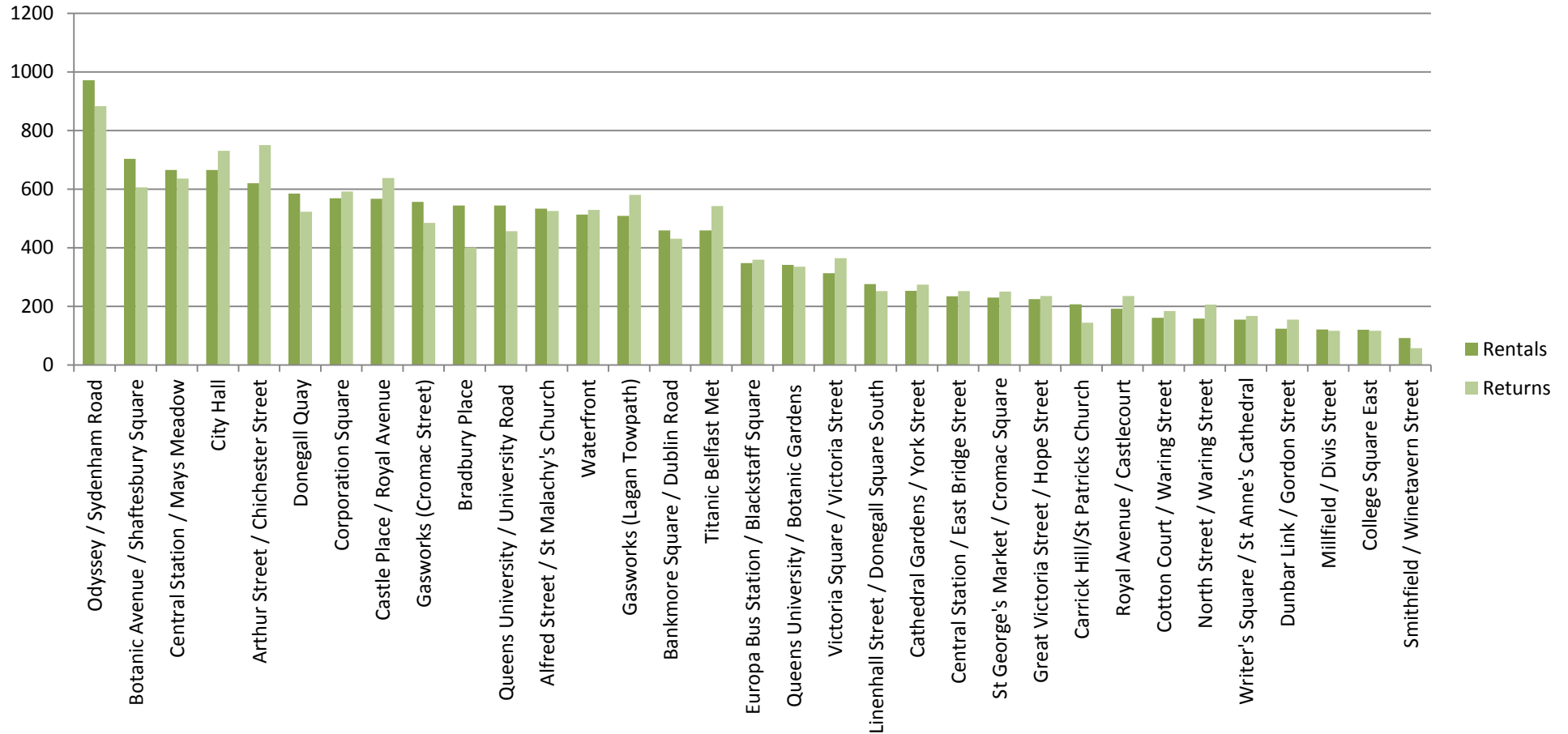
### Daily Cycle Hires



# December 2015

The most popular stations during the month of December for renting and returning combined were 1) Odyssey 2) City Hall 3) Arthur Street / Chichester Street as shown below:

## Rentals and Returns by Station



# December 2015

The total rentals to the end of December were 143,222. The weekly fluctuations of rentals from the launch of the scheme are shown below:

### Weekly Cycle Hires YTD

