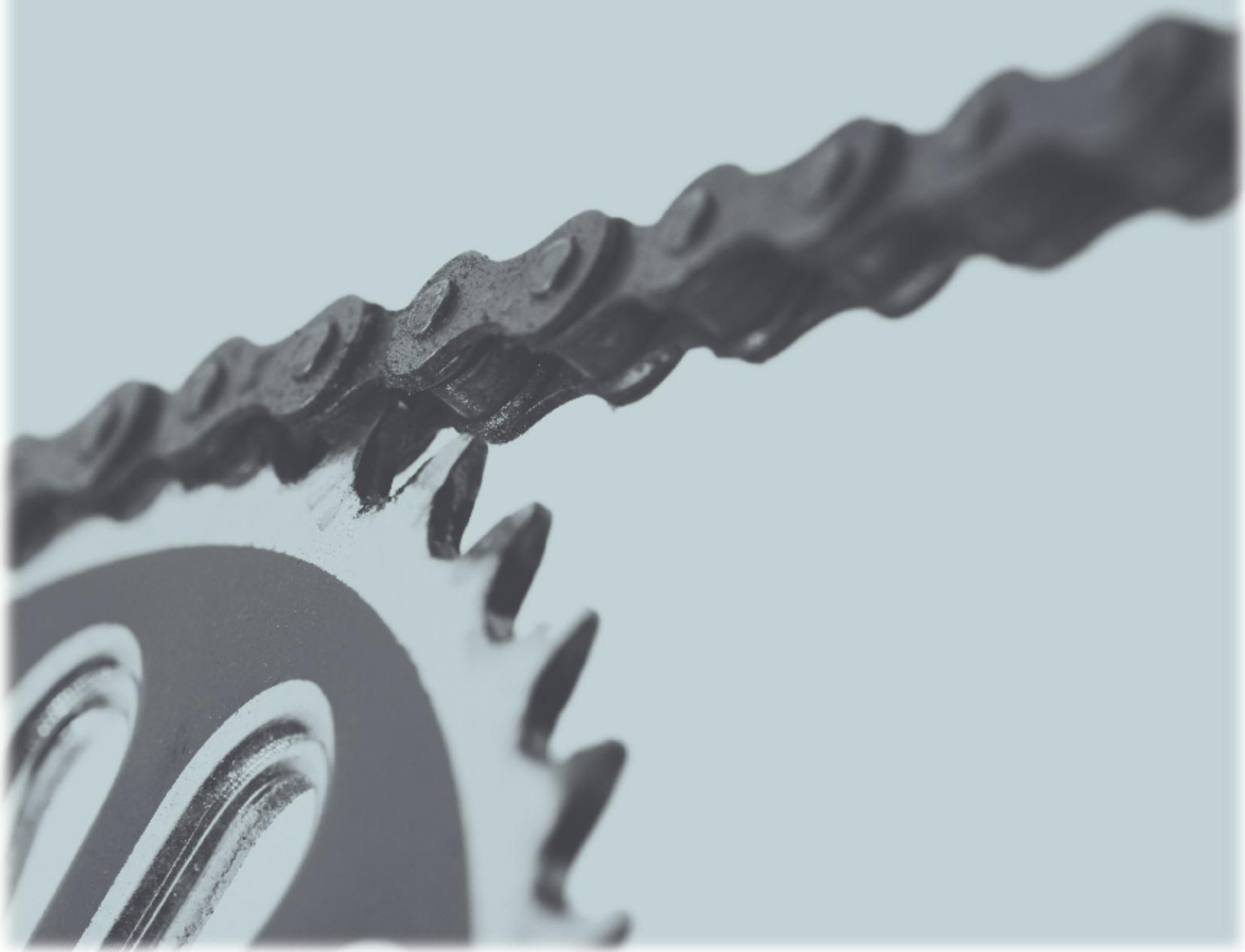


*Coca-Cola*  
zero

 belfast  
bikes

Performance Indicators

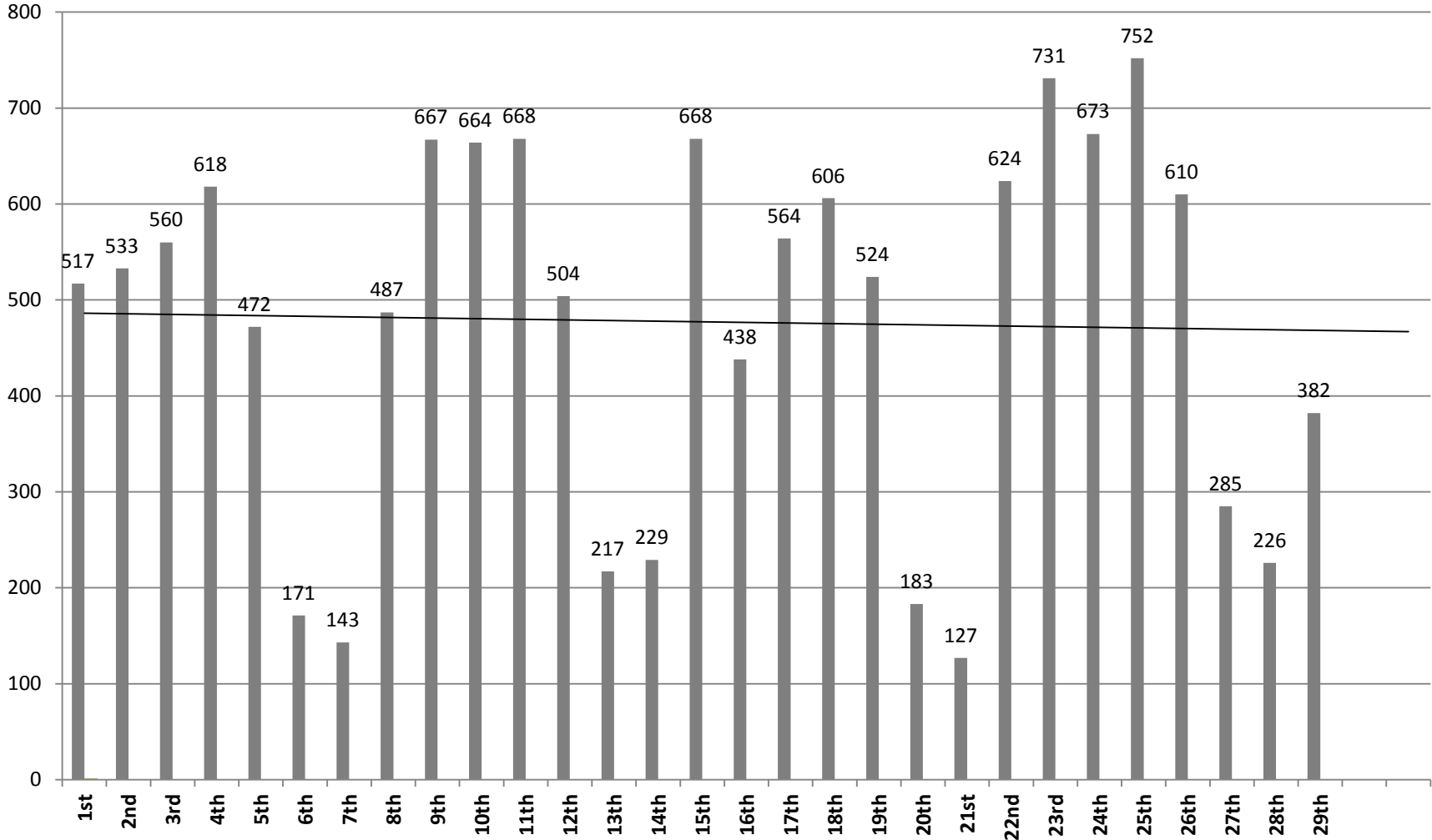
February 2016



# February 2016

During the month of February there were 13,843 rentals; (a 14% increase on January 2016) rental patterns were mostly affected by weather and commuting. The rental fluctuations are shown below:

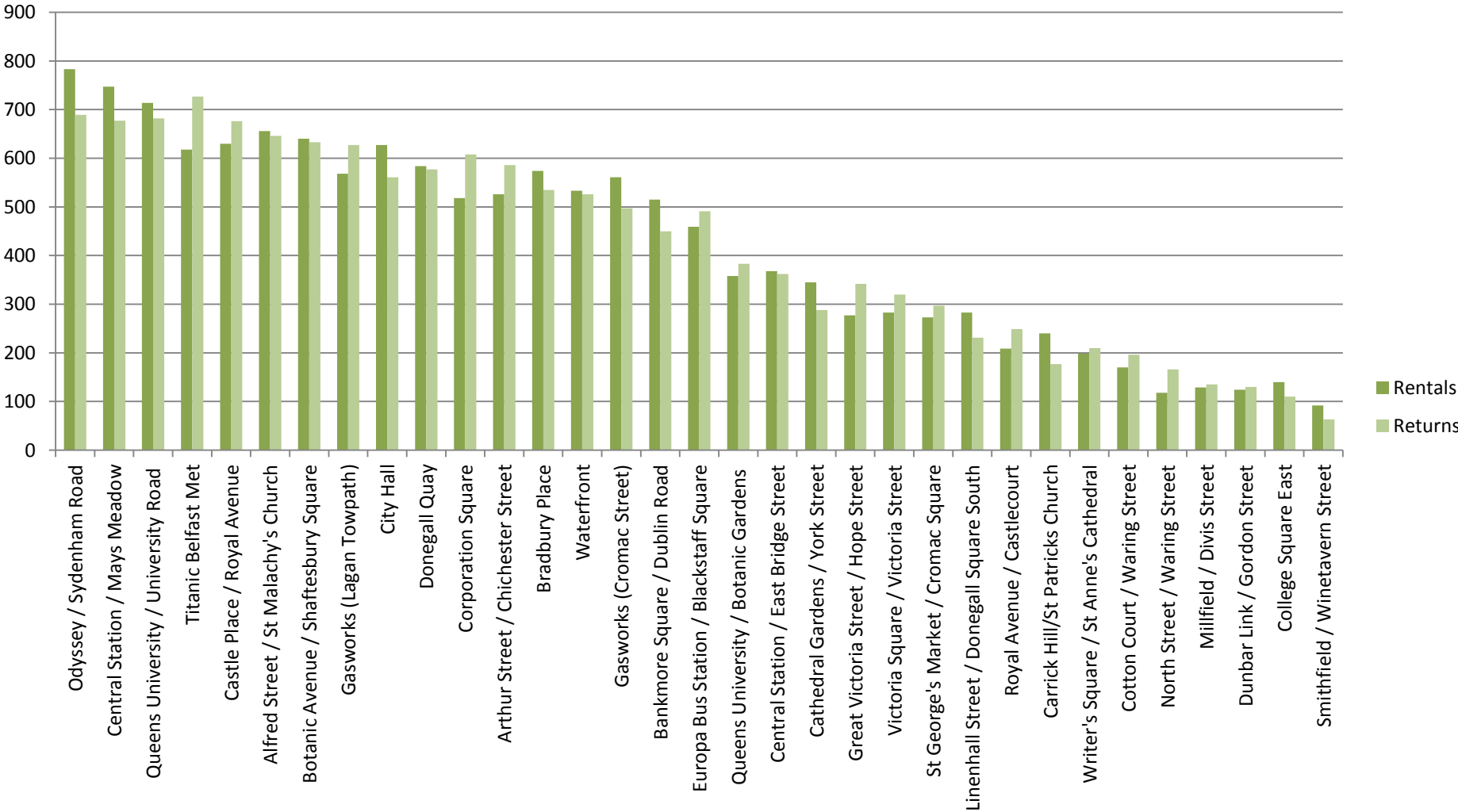
## Daily Cycle Hires



# February 2016

The most popular stations during the month of February for renting and returning combined were 1) Odyssey 2) Central Station 3) Queen's University / University Road as shown below:

## Rentals and Returns By Station



# February 2016

The total rentals to the end of February were 169,184. The monthly fluctuations of rentals from the launch of the scheme are shown below:

## Monthly Cycle Hires YTD

